

ROYAL YACHT CLUB OF VICTORIA

Standard Sailing Instructions



Including Supplementary Sailing Instructions:

- A. Wednesday Afternoon Pursuit Races
- B. Wednesday Twilight Fleet Racing
- C. Sunday Pursuit Races
- D. Saturday Fixed Mark Races
- E. Phoenix Trophy Passage towards Queenscliff
- F. Saturday Laid Course Races
- G. Sunday Single Handed Races
- H. Val Hodge Race
- I. Black Bottle Race
- J. Navigators Challenge Overnight Race
- K. Class Monkeys Winter Racing

For all other series/races refer to the appropriate Host Club as nominated on the Sailing Calendar or *RYCV NOR Annexure 3 2025-26* available via the Club Website.

In these sailing instructions the term Home Club means the Club where the boat is registered.

1 [SP] CREW DECLARATIONS

- 1.1 All boats shall register their Crew Declarations via the TopYacht Entry System. Crew declarations shall be completed after 0100hrs on the day of the race and before 15 mins prior to the warning signal of the boats first race of the day via the link in the supplementary Sailing Instructions.
- 1.2 Mandatory information for all crew shall be - name, contact number, a valid Australian Sailing number and emergency contact details.
- 1.3 Failure to lodge a compliant crew declaration will result in the boat being scored DSQ without hearing for each race the boat fails to lodge a crew declaration for on that day.
- 1.4 The crew declaration link for all races will be:

https://topyacht.com.au/db/kb2/mob_crew_login.php



2 NOTICES TO COMPETITORS

- 2.1 The Official Notice Board for RYCV is online at:
<https://rycv.com.au/sailing/keelboat/notice-to-competitors/>
- 2.2 Any change to the sailing instructions will be posted before 0800 on the day it will take effect. Any change to the schedule of races will be posted by 2000 on the day before it will take effect .
- 2.3 The Host Club may publish notices to competitors on their website .Attention may be drawn to the notice by SMS and/or email.
- 2.4 A copy of the notice may be posted on the notice board at the Western entrance to the Club.
- 2.5 Signals made ashore may be displayed on the Host club's flagpole and may be repeated at other clubs on their flag poles. When flag AP is displayed ashore '1 minute' is replaced with 'not less than 45 minutes' in the race signal AP.
- 2.6 Oral amendments to the Sailing Instructions may be made over the radio channel designated in the Supplementary Sailing Instructions (SSI) immediately prior to the warning signal of the race. Code Flag L may be displayed on the Race Committee Vessel to signal the change. These amendments may be repeated during the race. This amends RRS Race Signals.

3 RADIO COMMUNICATION

- 3.1 Except in an emergency, a boat that is racing shall not make voice or data transmissions and shall not receive voice or data communication that is not available to all boats.

4 AREAS THAT ARE OBSTRUCTIONS

- 4.1 The following areas are designated as obstructions: The waters of Webb Dock, the waters West of the Williamstown Channel contained between Gellibrand Pier and Breakwater Pier. These waters are out of bounds; boats shall not race in these waters.
- 4.2 Swing Basins are also obstructions and out of bounds when a vessel with an LOA of 50m or greater is manoeuvring within the swing basin. Designated swing basins have been established at the following locations:
- 4.2.1 At the entrance to Webb Dock
 - 4.2.2 Off the end of Gellibrand Pier
 - 4.2.3 Off the end of Station Pier
- 4.3 There is a moving obstruction around any commercial vessel that is under way, extending 500m from the bow, 50m from the stern, and 30m from the sides.
- 4.4 **[DP]** It is a requirement that competitors keep clear of commercial shipping (see Appendix A) Any boat subject of a complaint by a Ship's master for any reason whatsoever may be disqualified.

5 HEARING REQUESTS

- 5.1 Protest Forms are available at : <https://rycv.com.au/sailing/protests/>
- 5.2 Protests shall be lodged at the host club within two (2) hours after the finishing time of the last boat of any division to finish. Protest forms may be lodged by email.
- 5.3 Protests/Arbitration will generally be heard at 1930 at the Host Club the following Thursday. Video Conference technology may be used at the Protest Committee's discretion.

Host club contact details are as follows:

Club	Email	Phone
Hobsons Bay Yacht Club	racing@hbysc.org.au	9376393
Royal Melbourne Yacht Squadron	boating@rmys.com.au	9534 0227
Royal Yacht Club of Victoria	sailing@rycv.asn.au	93971277

6 OFFICIAL VESSELS

- 6.1 Official vessels will display the burgee of the club hosting the event.

7 FURTHER INFORMATION

For further information please contact:

Owen Church
Sailing Admin
sailing@rycv.asn.au
mobile 0416149167

Appendix A – Commercial Shipping

A1. [SP] [NP] Interfering with Commercial Shipping

If your boat interferes with commercial shipping, or ignores Race Management instructions around commercial traffic, you will be disqualified without a hearing.

A2. [DP] Using Engines to Avoid Shipping

- You may use your engine only to avoid commercial shipping.
- Report the details to the Race Committee within one hour of finishing.
- You must not gain an advantage from using your engine.
- After using the engine, bring your boat to a complete stop before continuing to race.

A3. Observe International Collision Regulations (COLREGS 1972) , Marine Safety Regulations, rules made by port managers and the Harbour Master Directions.

- COLREGS 1972 makes it clear – follow the rules however good seamanship comes first: everyone is responsible for avoiding collisions, even if it means departing from the rules to stay safe.

A4. Stay Clear of Large Ships

- Sailing boats must not get in the way of commercial vessels.
- Keep at least 500 metres ahead of the bow of any large ship.

A5. Bow Flare and Blind Spots

- Large ships can't see you directly in front of their bow.
- Always stay visible to the ship's bridge.
- Inside 500 metres, your boat may disappear from view because of bow flare or overhanging structures.

A6. VHF Radio

- You must carry a working VHF radio (Special Regulations Category 6).
- Keep it switched on and monitor the race channel.
- The Race Committee may use it to provide race updates or navigational warnings.
- If a boat is fitted with an Automated Identifying System (AIS) it will be switched on to allow monitoring by the race committee and commercial vessels.

A7. Harbour Master Directions

- Read and understand the Harbour Master Directions (Melbourne – Section 5)
- <https://ports.vic.gov.au/marine-operations/harbour-masters-directions/>
- Key points:
 - Keep clear of ships 50m LOA or greater.
 - Keep clear of tugs and line boats assisting other vessels.
 - Be extra careful in shipping channels and fairways.
- Monitor VTS Channel 12 if there's any chance of conflict and respond immediately to calls from commercial vessels.

A8. Shipping Sound Signals 5+ short blasts – danger signal; the ship is unsure of your intentions

A9. Protests

- The Race Committee can protest a boat if there are reports of possible breaches of these rules or Harbour Master Directions.
- This changes RRS 60.4(b).

Appendix B – Course Areas

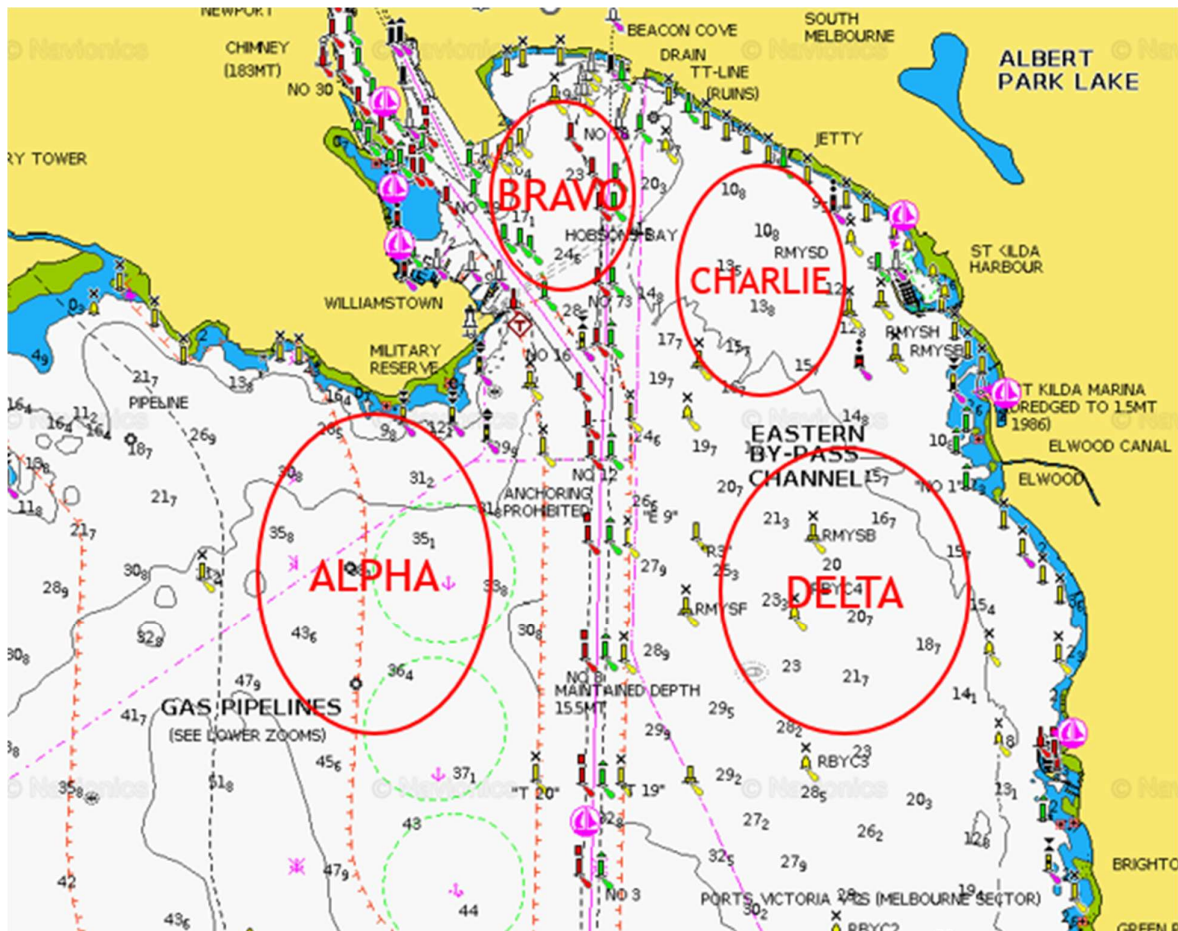


Figure 1 - General Overview of RYCV Course Areas