



Notice to Competitors



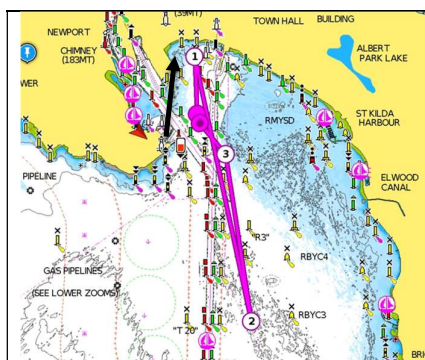
Bluebird State Championship 2025 15th March 2025 Long Distance Race

The race committee advises the following for the Bluebird long distance race.

Courses

The Start Area will be the Bravo Course area.

The course will be selected from *Standard Sailing Instruction - Attachment 1 Courses and Marks – v7.1, Courses 4 to 14* and the Bluebird Special courses as listed below.

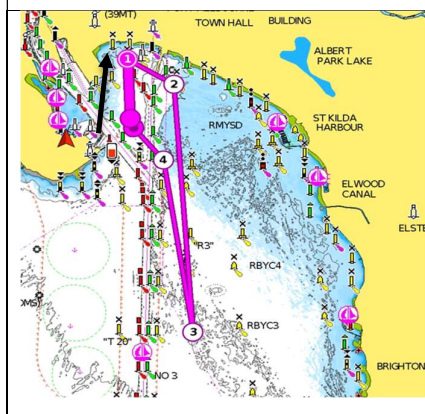


Bluebird Special Course

Course 15

Start/Finish – Near Xray mark

Start in a Northerly direction
R4 to Starboard, round R2 to Port, passing
Ch pile 71 to port, round V mark to
Starboard, Then to Finish



Bluebird Special Course

Course 16

Start/Finish – Near Xray mark

Start in a Northerly direction
R4 to Starboard, round RMYS G to
Starboard, round R2 to Port, passing Ch pile
71 to port, round V mark to Starboard,
Then to Finish

Rationale:

Provide visibility of the Bluebird long-distance racecourse and start area.

Owen Church

Sailing Administrator

14 March 2025

1000hrs