



NOTICE OF RACE

Classic Cup 2024 Tumlaren Invitational

1 November 2024

Royal Yacht Club of Victoria (RYCV) is the Organising Authority (OA).

1. RULES

- 1.1. Racing will be governed by the rules as defined in The Racing Rules of Sailing (RRS).
- 1.2. [SP] Australian Sailing (AS) Special Regulations Part 1 Category 7.
- 1.3. [SP] Rule 40.1 (wearing PFDs) always applies while racing.
- 1.4. The penalty for a breach of the AS Prescription to RRS 46 shall be a Discretionary Penalty [DP]
- 1.5. Appendix T Arbitration applies.
- 1.6. [SP] Boats shall carry VHF radios and monitor Ch.69 at all times while afloat.
- 1.7. [DP] Boats shall promptly co-operate with any request by a Committee to inspect or audit a boat.
- 1.8. Boats shall not use electronic navigation or tactical equipment while racing
- 1.9. Recording and uploading tracking information is permitted, provided it is not accessed while racing.

2. CHANGES TO NOR/SI & NOTICES TO COMPETITORS & SIGNALS ASHORE

- 2.1. The Official Notice Board (ONB) shall be <https://rycv.com.au/classic-yachts-cup-regatta-2024/>
- 2.2. Any change to the NOR or SI will be posted 1.5 hours before the warning signal of the race it will affect or 10 minutes before AP is removed ashore, except that any change to the schedule of races will be posted by 1900 hours on the day before it will take effect.
- 2.3. SMS messages and emails are a secondary courtesy notification.
- 2.4. Signals made ashore will be displayed on the main signal mast on the lawn North of the RYCV clubhouse

- 2.5. When flag AP is displayed ashore, '1 minute' is replaced with 'not less than 30 minutes' in the race signal AP.

3. ELIGIBILITY AND ENTRY

- 3.1. Boats in these races are entered by invitation only by the Classic Yacht Association of Australia.
- 3.2. Boats shall maintain \$10m public liability insurance cover at all times.

4. RACE SCHEDULE

- 4.1. 1 November 2024 (3 x Races back-to-back)
- 4.2. First Warning Signal 1055

5. RACING AREA

- 5.1. The racing area shall be generally as set out in the course map diagram or as detailed in the SI's.

6. SCORING

- 6.1. One race will constitute a series.
- 6.2. Series scoring will be as detailed in Appendix A of RRS
- 6.3. Rule A5.3 will apply
- 6.4. Boats still racing at the finish window will be scored TLE, 1 point more than the number of boats that finish. The Race Committee may allocate such a score before the finish window closes.

7. POST-RACE, STANDARD [SP] and DISCRETIONARY [DP] PENALTIES

- 7.1. The Post Race Penalty in Arbitration T1 (b) is changed to increase a boat's score by 25% of the difference between her score without the penalty and the score for retirement.
- 7.2. The Race Committee may apply a Standard Penalty [SP] without a hearing, or the Protest Committee may apply a Discretionary Penalty [DP] or [SP] where a rule is notated that way. This changes Rules 35, 63, A4 and A5.

8. DISCLAIMER

- 8.1. Competitors participate in a race entirely at their own risk. See rule 3, Decision to Race. The Organising Authorities will not accept any liability for material damage or personal injury, or death sustained in conjunctions with or prior to, during, or after the race.



SAILING INSTRUCTIONS

Classic Cup 2024 Tumlaren Invitational

1 November 2024

1. [SP] CREW DECLARATION & SIGN-ON

1.1 – Boats shall register all crew using the crew register process on the Official Notice Board (ONB) before going to their boat to race.

1.2 - A boat that retires or stops racing shall notify the Race Committee as soon as reasonably possible via VHF on Channel 69.

2. CLASS FLAG

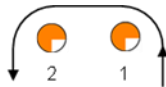
The Class Flag is International Code Flag T.

3. COURSES

Signalled by International Code Flag prior to the warning signal

Course 1

Start, 1,2,
3 Gate, 1 Finish



Course 2

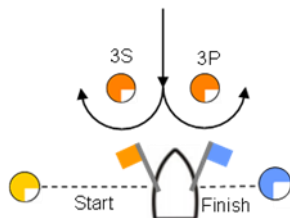
Start, 1,2,
3Gate 1a, Finish



Course 3

Start, 1a,
3 Gate 1a, Finish

If 3S is missing round
3P to port



4. INFLATABLE MARKS

Start Pin and 1a - Yellow

Finish Pin - Blue

Mark 1, 2, and Gate 3P & S – Orange

Change Marks, if used, as above with black band

5. THE START (RRS 26)

5.1 - Races will be started by using rule 26

5.2 - The starting line will be between the yellow starting mark (pin end) and a staff displaying an orange flag on the committee vessel.

5.3 - A boat that does not start within 10 minutes after her starting signal will be scored Did Not Start without a hearing. This changes RRS A4 and A5.

6. CHANGING THE COURSE

To change the next leg of the course, the race committee will lay a change mark (or move the finishing line) and remove the original mark as soon as practicable. When in a subsequent change a new mark is replaced, it will be replaced by an original mark.

8. THE FINISH

The finishing line shall be between a staff displaying a blue flag on the race committee vessel and the course side of the finishing mark.

9. TIME LIMITS

The finish window is the elapsed time of the first boat that sails the course and finishes plus 50%.

10. PROTESTS, SCORING ENQUIRIES & HEARING

11.1 – The protest time limit is 60 minutes after the last boat has finished the last race of the day, or the race committee signals no more racing today, whichever is later.

11.2 - Notice of intension to request a hearing must be advised on mobile 0402858123 within the protest time limit and written forms must be lodged at the race office within 60 min of the time limit.

11.3 - Hearing request forms are available from the race office. Interested parties will be contacted to advise the time and location of hearing.