



## Supplementary Sailing Instructions For

### C Sunday Pursuit Races

#### C1 RACE RADIO

The Race Committee will make Race Management announcements on VHF Channel 69.

#### C2 CLASS FLAGS

International Code Flag "R"

#### C3 CREW DECLARATION LINK

<http://tymob.net.au/mycrew.php?evid=1827>

*Crew Declaration  
Link QR code*



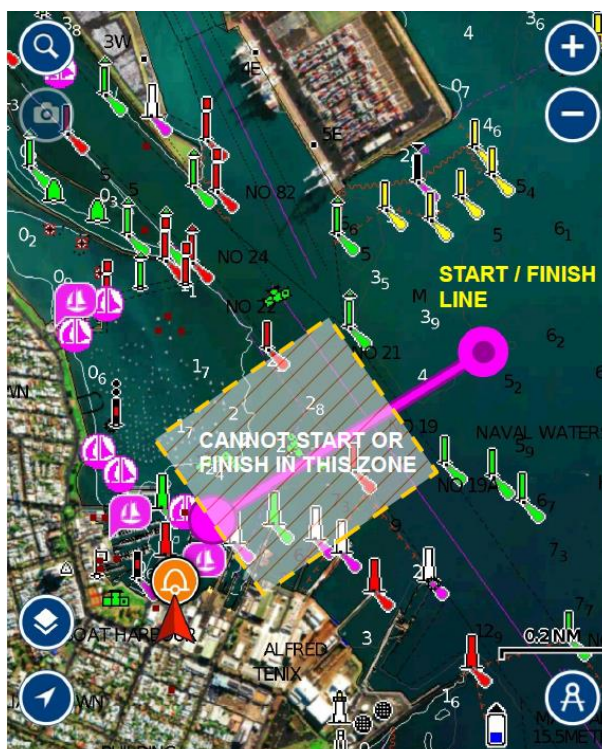
#### C4 COURSES AND MARKS

Selected from the combined course-book **Sailing Instruction Attachment 1 - Courses and Marks** and signaled by display of White Boards with Black numbers no later than the warning signal.

#### C5 THE START

The start sequence will be communicated by radio on VHF Ch 69  
ALL COMPETITORS ARE REQUESTED TO SIGN IN TO "ROYALS 1" (START BOX) OF THEIR INTENTION TO RACE ON VHF CH 69 BETWEEN THE HOURS OF 10:30 am -10:45 am ON THE DAY OF THE RACE AND ALSO ADVISE IF SAILING SINGLE HANDED.

The starting line will be between the flag staff displaying the club burgee next to the race box at the northern end of the RYCV marina, and mark Xray. When starting there is a designated obstruction along the line between Channel Markers 19 and 21 and boats shall pass to the East of this line. An orange limit mark may be laid and if so a boat starting shall pass between this mark and mark Xray. See Diagram.



THE PREPARATORY SIGNAL FOR EACH START GROUP IS DEEMED TO BE 4 MINUTES BEFORE THE START GROUP START TIME

**[DP]** Competitors shall not start before their designated Group Start time.

Group 1 starts with the lowering of the Class Flag. As Group 1 Starts a board displaying numeral 2 will be shown.

When Group 2 starts a sound signal will be made and the board displaying numeral 2 will be replaced with numeral 3.

When Group 3 starts a sound signal will be made and a board displaying numeral 4 will be displayed.

When Group 4 starts a sound signal will be made and a board displaying numeral 5 will be displayed.

This shall continue until all subsequent groups have started.

## **C6 THE FINISH**

The finishing line shall be between the flag staff displaying the club burgee next to the race box at the northern end of the RYCV marina, and mark Xray.

When finishing there is a designated obstruction along the line between Channel Markers 19 and 21 and boats shall pass to the East of this line when finishing. An orange limit mark may be laid and if so, a boat finishing shall pass between this mark and mark Xray.

Competitors shall take their own finishing time in the format "HOUR: MIN: SEC" and declare the finish time on VHF Ch 69 to the RYCV Race Committee within 10 minutes of their finishing time.

## **C7 TIME LIMITS**

The time limit for the first boat is 2.5 hours. If no boat finished within the time limit, the race will be abandoned.

**[DP]** Boats that have not finished within 3 hours shall be recorded and scored DNF. (This alters the RRS)