



# Hobsons Bay Yacht Club Royal Yacht Club of Victoria

## SI – Attachment 1 - Club Courses – v6.0

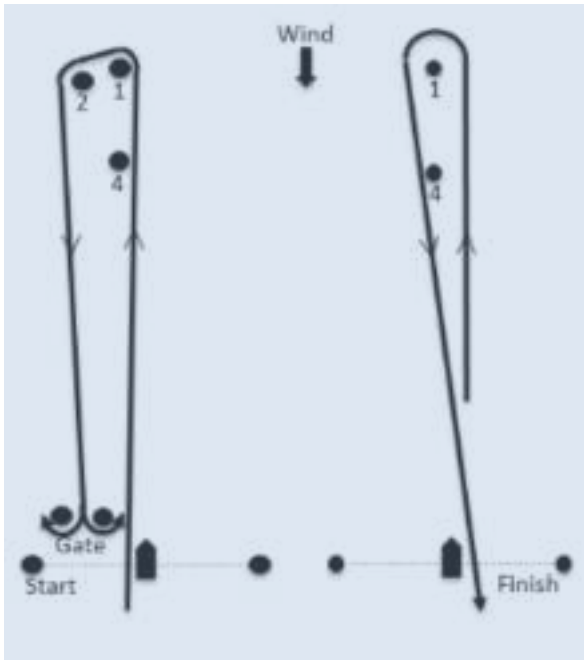
Courses may be selected from the following –

W/L Courses	1 to 3	Windward Leeward
Club Courses	4 onwards	RYCV - Wednesday Afternoon, Sunday Morning Courses
	20 onwards	RYCV/HBYC Wednesday Twilights
	30 onwards	HBYC - Sunday Pursuit Courses
	40 onwards	HBYC - Thursday Twilight Pursuit
	50 onwards	HBYC/RYCV Brass Monkey - Divisions 2 and 3
	60 onwards	HBYC/RYCV Brass Monkey - Division 1
	70 onwards	HBYC Two-Handed and HBYC Club Courses
	80 onwards	RYCV Club Courses

Revisions

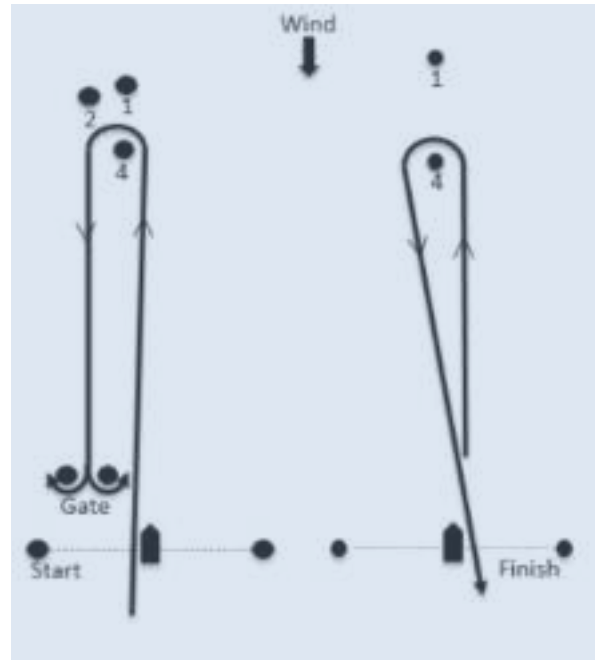
**Windward Leeward Courses**

**Course 1**



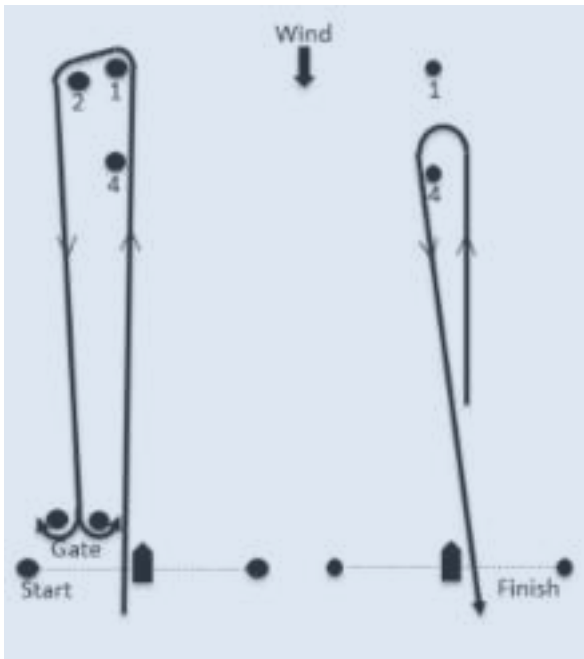
Start – 1 – 2 – Gate – 1 – Finish

**Course 2**



Start – 4 – Gate – 4 – Finish

**Course 3**



Start – 1 – 2 – Gate – 4 – Finish

**RYCV - Wednesday Afternoon,  
Sunday Morning**

**Course 4 – Southerly**

Distance 7.6 nm



Start/Finish – Near Xray mark.  
Start in a South-Easterly direction – V mark to port – R4 to port – Xray to port – V mark to port – R4 to port – Xray to port – V mark to port – R4 to port – finish.

**Course 6 – East/Westerly**

Distance 7.0 nm



Start/Finish - Near Xray mark.  
Start in a South-westerly direction – V mark to starboard - Gellibrand Shoal mark to starboard – P3 to starboard – Gellibrand Shoal mark to port – V mark to port - finish.

**Course 5 – Northerly**

Distance 7.6 nm



Start/Finish – Near Xray mark.  
Start in a North-Easterly direction – R4 to starboard – V mark to starboard – Xray to starboard – R4 to starboard – V mark to starboard – Xray to starboard – R4 to starboard – V mark to starboard — finish.

**Course 7 – Southerly**

Distance 7.7 nm



Start/Finish - Near Xray mark.  
Start in a Northerly direction – R4 mark to starboard – R3 to port – RMYS A to port – R4 to port – finish.

**Course 8 – East/Westerly**

Distance 7.7 nm

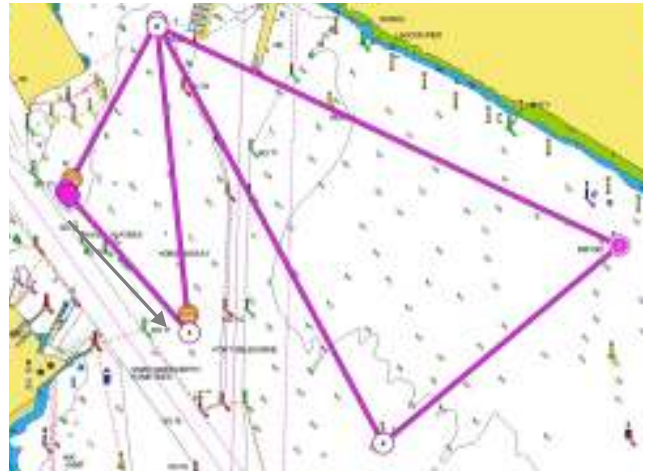


Start/Finish - Near Xray mark.

Start in a Northerly direction – R4 mark to starboard – RMYS A to starboard - R3 to starboard – R4 to port – finish.

**Course 10 – South Westerly**

Distance 7.4 nm



Start/Finish - Near Xray mark.

Start in a Southerly direction – V mark to port – R4 to starboard – RMYS D to starboard – RMYS C to starboard – R4 to port – finish.

**Course 9 – South Easterly**

Distance 7.4 nm



Start/Finish - Near Xray mark.

Start in a Northerly direction – R4 to starboard – RMYS C to port – RMYS D to port – R4 to port – V mark to starboard - finish.

**Course 11 – North Easterly**

Distance 7.1 nm



Start/Finish - Near Xray mark.

Start in a Northerly direction – R4 to starboard – RMYS G to starboard – R3 to starboard – passing Ch pile 71 to port – V mark to starboard – R4 to port – finish.

**Course 12** – Southerly  
Distance 6.7 nm



Start/Finish - Near Xray mark.

Start in a Northerly direction – R4 to starboard – RMYS G to starboard – RMYS F to starboard – passing Ch pile 71 to port – V mark to starboard – finish.

**Course 14** – Southerly  
Distance 7.5 nm



Start/Finish - Near Xray mark.

Start in a Southerly direction – V mark to port – RMYS G to starboard – RMYS D to starboard – RMYS E to starboard – R3 to starboard – passing Ch pile 71 to port – V mark to starboard – finish.

**Course 13** – Southerly  
Distance 6.9 nm



Start/Finish - Near Xray mark.

Start in a Southerly direction – V mark to port – RMYS D to starboard – RMYS E to starboard – R3 to starboard – passing Ch pile 71 to port – V mark to starboard – finish.

## RYCV/HBYC Wednesday Twilights

### **Course 20 – Southerly**

Distance 6.3 nm



Start - Near RMYS G.

Finish – X Ray mark

Start in a Southerly direction – east of passing marks Ch 71, T25, T23 - R3 to starboard - east of bounding marks T23, T25, Ch 71 – R4 to port – V mark to starboard – finish.

### **Course 22 – Northerly**

Distance 5.2 nm



Start – Near Ch 72.

Finish – X Ray mark

Start in a Northerly direction – R4 to starboard - east of bounding marks Ch 71, T25 – R3 to starboard – east of Ch 71 - V mark to port – finish.

### **Course 21 – Southerly**

Distance 5.1 nm



Start - Near RMYS G.

Finish – X Ray mark

Start in a Southerly direction – east of passing marks Ch 71, T25 – SB3 to starboard - east of bounding marks T25, Ch 71 – R4 to port – V mark to starboard – finish.

### **Course 23 – Northerly**

Distance 4.2 nm



Start – Near Ch 72.

Finish – X Ray mark

Start in a Northerly direction – R4 to starboard - east of bounding marks Ch 71, T25 – SB3 to starboard – east of Ch 71 - V mark to port – finish.

### Course 24 – Southerly

Distance 2.6 nm



Start – Near RMYS G.

Finish – X Ray mark

Start in a Southerly direction - east of bounding marks

Ch 71, T23, T25 – SB3 to starboard – east of T25,

T23, Ch 71 - V mark to port – finish.

### Course 25 – Northerly

Distance 2.1 nm



Start – Near Ch 72.

Finish – X Ray mark

Start in a Northerly direction – R4 to port - V mark to

starboard – finish.

## HBYC – Sunday Pursuit

### **Course 30 – Northerly**

Distance 7.0 nm



Start/Finish - East of Ch 75.

Start in a North-Westerly direction - R4 to starboard - RMYS A to starboard - RMYS F to starboard, east of bounding marks Ch. 7, 9, 11 and 71 – finish.

### **Course 32 – Westerly/Easterly**

Distance 5.1 nm



Start/Finish - Near V mark.

Start in an Easterly direction – RMYS A to port - RMYS D to port – R4 to port - finish.

### **Course 31 – South/South-East**

Distance 7.0 nm



Start/Finish - East of Ch 75.

Start in a Southerly direction - east of bounding marks Ch. 71, 11, 9 and 7 – RMYS F to port - RMYS A to port - R4 to port - finish.

### **Course 33 – Northerly**

Distance 5.1 nm



Start/Finish - Near V mark.

Start in a Northerly direction - R4 to starboard - RMYS D to starboard - RMYS A to starboard, east of – finish.



## **HBVC – Thursday Twilight Pursuit**

### **Course 40 – Northerly**

Distance 4.5 nm



Start/Finish - Near V mark.

Start in a Northerly direction - R4 to starboard – V mark to starboard – R4 to starboard – finish.

### **Course 42 – Southerly**

Distance 4.5 nm

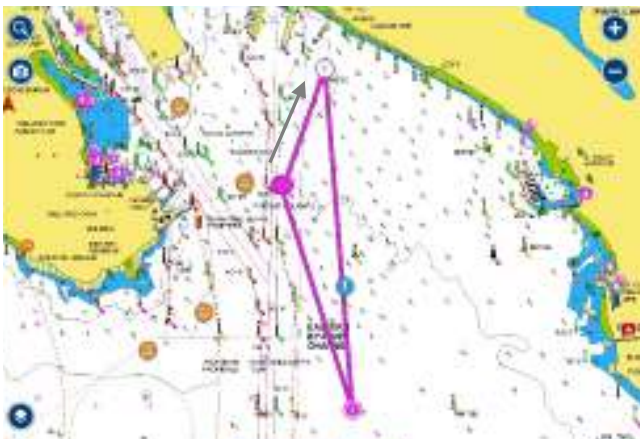


Start/Finish - Near R4.

Start in a Southerly direction – V mark to port – R4 to port – V mark to port – finish.

### **Course 41 – Northerly**

Distance 4.6 nm



Start/Finish – East of Ch 73.

Start in a Northerly direction – RMYS G to starboard – R3 to starboard, east of bounding marks Ch. 7, 9, 11 and 71 – finish.

### **Course 43 – Southerly**

Distance 4.6 nm



Start/Finish – East of Ch 73.

Start in a Southerly direction, east of bounding marks Ch. 7, 9, 11 and 71 – R3 to port - RMYS G to port – finish.

**Course 44 – Westerly/Easterly**

Distance 5.2 nm



Start/Finish - East Ch 75.

Start in an Easterly direction – RMYS D to starboard –  
through start/finish to starboard - RMYS D to starboard  
– finish.



**Course 54** – Northerly

Distance 8.8 nm



Start: West of Ch 74.

Finish: between RMYS C and Committee Vessel.

Start in a Northerly direction – R4 to starboard –  
RMYS C to starboard – R3 to port – east of passing  
marks Ch. 11, 9 and 71 – RMYS G to port – R3 to port  
– east of passing mark Ch. 11 – finish.

**Course 55** – Northerly

Distance 11.5 nm



Start: West of Ch 74.

Finish: between RMYS C and Committee Vessel.

Start in a Northerly direction – R4 to starboard –  
RMYS C to starboard – R2 to port – east of passing  
marks Ch. 7, 9, 11 and 71 – RMYS G to port – R3 to  
port – east of passing mark Ch. 11 – finish.



### Course 64 – South-East

Distance 12.5 nm



Start: West of Ch 74.

Finish: between the RMYS tower and RMYS A.

Start in a south-easterly direction - east of bounding mark Ch.71 – RMYS B to port – RMYS A to starboard – RMYS D to port – RMYS G to port – RMYS B to port – RMYS A to starboard – RMYS D to port - RMYS G to port – finish.

### Course 65 – South-West

Distance 13.8 nm



Start: West of Ch 74.

Finish: between the RMYS tower and RMYS A.

Start in a south westerly direction – Gellibrand Shoal mark to starboard – Outer Anchorage to port – RMYS E to port – finish.

Shorten Course Option – delete ‘Outer Anchorage to port’ and replace with ‘P2 to port’.

### Course 66 – Westerly

Distance 10.8 nm



Start: East of Ch 73.

Finish: between the RMYS tower and RMYS A.

Start in a westerly direction – V mark to port – RMYS B to starboard – P3 to port – RMYS B to port - RMYS E to port – finish.

### Course 67 – Easterly

Distance 11.7 nm



Start: East of Ch 73.

Finish: between the RMYS tower and RMYS A.

Start in an easterly direction – RMYS A to starboard – RMYS B to starboard - P3 to port – RMYS B to port - RMYS E to port – finish.

## **HBYC Two-Handed, Club Courses**

**Course 70 – South-Westerly**  
Distance 16.3 nm



Start: Near RMYS C.  
Finish – line projected between the Williamstown Timeball Tower and T28 passing T28 to starboard.  
Start in a South Westerly direction – P3 to port - Outer Anchorage to port – Spoil Ground to Port – Gellibrand Shoal Mark to port – finish.

**Course 72 – Southerly**  
Distance 10.6 nm



Start/Finish: South. of Gellibrand Shoal Mark  
Start in a southerly direction - Outer Anchorage to starboard - P3 to starboard – finish.

**Course 71 – South Westerly**  
Distance 11.2 nm



Start/Finish: South. of Gellibrand Shoal Mark.  
Start in a south westerly direction - east of bounding mark Pt Cook East Cardinal Mark - Pt Cook South Pile to port - finish.

**Course 73 – Northerly**  
Distance 10.4 nm



Start/Finish: 750m South of Gellibrand Shoal Mark  
Start in a northerly direction - A Mark to Port - P2 to starboard - P3 to starboard - P2 to port – finish.

## RVCV Club Courses

### **Course 80 – Southerly**

Distance 13.4 nm



Start/Finish – South of Gellibrand Shoal Mark  
Start in a Southerly direction – Uniform mark to starboard - P3 to port – P2 to starboard – Zulu mark to starboard - finish.

### **Course 82 – Westerly**

Distance 13.4 nm



Start/Finish - South of Gellibrand Shoal Mark  
Start in a Westerly direction – P3 to port – P2 to starboard – Pt Cook Sanctuary Limit mark to starboard - finish.

### **Course 81 – Southerly**

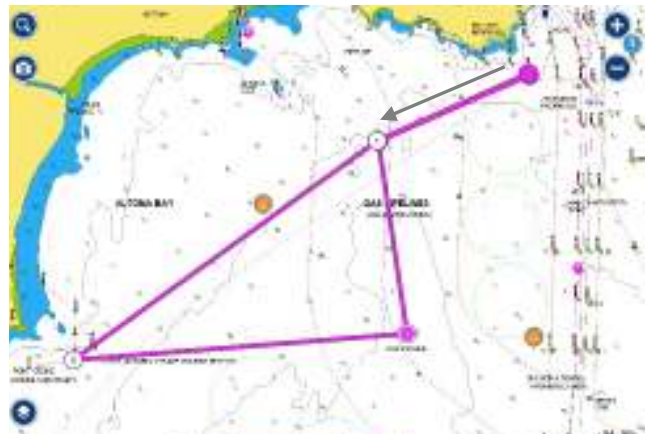
Distance 11.7 nm



Start/Finish - South of Gellibrand Shoal Mark  
Start in a Southerly direction – P2 to starboard – Zulu mark to starboard – P3 to starboard – P2 to port - finish.

### **Course 83 – Westerly**

Distance 13.4 nm



Start/Finish - South of Gellibrand Shoal Mark  
Start in a Westerly direction – P3 to port - Pt Cook Sanctuary Limit mark to port – P2 to port – P3 to starboard - finish.



**Course 84** – Westerly

Distance 9.5 nm



Start/Finish - South of Gellibrand Shoal Mark  
Start in a Southerly direction – Uniform mark to starboard – P2 to starboard – Zulu mark to starboard – finish.

**Course 85** – Westerly

Distance 10.9 nm



Start/Finish - South of Gellibrand Shoal Mark  
Start in a Southerly direction – P2 to starboard – P3 to starboard – P2 to port – finish.

## Marks

The mark positions and descriptions are approximate and a guide only and must not be used for navigational purposes.

Detailed locations of marks and features within Port Phillip are depicted on the relevant Charts AUS143, AUS154 and AUS155, as modified by Notices to Mariners.

### A Mark

Laid mark set 250m south of Gellibrand Shoal Mark

<b>Channel 7</b> (Ch.7) Port of Melbourne Channel Pile	37 53.83S	144 55.72E
<b>Channel 9</b> (Ch.9) Port of Melbourne Channel Pile	37 53.19S	144 55.75E
<b>Channel 11</b> (Ch.11) Port of Melbourne Channel Pile	37 52.69S	144 55.76E
<b>Channel 17a</b> (Ch.17a) Port of Melbourne Channel Pile	37 51.54S	144 55.18E
<b>Channel 19</b> (Ch.19) Port of Melbourne Channel Pile	37 51.48S	144 55.00E
<b>Channel 71</b> (Ch.71) Port of Melbourne Channel Pile	37 52.06S	144 55.76E
<b>Channel 72</b> (Ch.72) Port of Melbourne Channel Pile	37 51.72S	144 55.67E
<b>Channel 73</b> (Ch.73) Port of Melbourne Channel Pile	37 51.72S	144 55.77E
<b>Channel 74</b> (Ch.74) Port of Melbourne Channel Pile	37 51.30S	144 55.68E
<b>Channel 75</b> (Ch.75) Port of Melbourne Channel Pile	37 51.29S	144 55.80E
<b>Channel 76</b> (Ch.76) Port of Melbourne Channel Pile	37 51.09s	144 55.62E
<b>Gellibrand Shoal Mark</b> An East Cardinal Mark	37 52.56S,	144 54.90E
<b>Outer Anchorage</b> A pile with a light frame	37 56.91S	144 51.49E
<b>P2</b> A yellow buoy marked P2	37 55.46S	144 53.19E
<b>P3</b> A pile with light frame	37 53.38S	144 52.85E
<b>Pt Cook East Cardinal Mark</b> An East Cardinal Mark	37 55.58S	144 48.92E
<b>Pt Cook Sanctuary Limit Mark</b> Yellow special purpose beacon	37 55.74S	144 48.69E
<b>Pt Cook South Pile</b> Yellow Pile, top mark shape - X shape	37 55.74S	144 48.69E
<b>R2</b> Yellow light Buoy marked R2	37 54.54S	144 56.34E
<b>R3</b> Yellow light Buoy marked R3	37 53.10S	144 56.23E
<b>R4</b> Yellow Buoy located	37 50.70S,	144 55.36E
<b>RMYS A</b> An yellow truncated pyramid	37 51.90S	144 57.47E

HBYC/RYCV – Combined Club Courses

<b>RMYS B</b> An yellow truncated pyramid	37 53.18S	144 57.20E
<b>RMYS C</b> An yellow truncated pyramid	37 52.19S,	144 56.41E
<b>RMYS D</b> An yellow truncated pyramid	37 51.48S,	144 57.47E
<b>RMYS E</b> An yellow truncated pyramid	37 52.15S,	144 57.79E
<b>RMYS F</b> An yellow truncated pyramid	37 53.59S	144 56.30E
<b>RMYS G</b> An yellow truncated pyramid	37 51.000S	144 56.25E
<b>SB3</b> Special Purpose or General Buoy	37 52.48S	144 56.31E
<b>Spoil Ground</b> A yellow buoy	37 59.05S	144 53.05E
<b>T25</b> Yellow Transit Lane Mark	37 52.48S	144 55.91E
<b>T28</b> Yellow Transit Lane Mark	37 52.31S	144 55.19E
<b>Uniform</b> RYCV laid mark	37 55.64S	144°54.97E
<b>V Mark</b> (Volvo Finish mark) Yellow Special Purpose Buoy	37 51.80S	144 55.50E
<b>Xray</b> RYCV laid mark	37 51.28S	144 54.97E
<b>Zulu</b> RYCV laid mark	37 54.20S	144 51.26E