

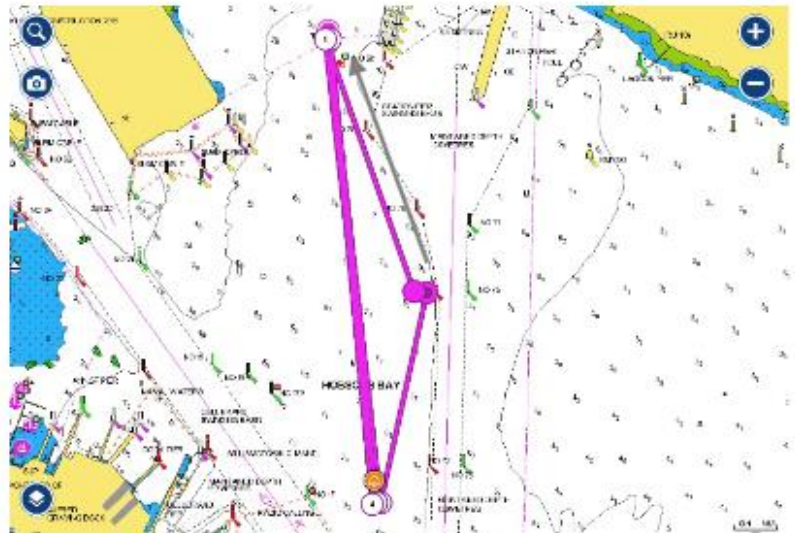


Winter 2024 Notice to Competitors #7 LAURA GLORIA SERIES

The Race Committee advises the following additional course to the Sailing Instructions:

APPENDIX B

Course 19 (Pursuit) – Northerly Distance 6.9 nm



Start/Finish - West Ch 74.

Start in a Northerly direction - R4 to port - V mark to port – R4 to port – V mark to port – R4 to port – V mark to port - finish.

Rationale: Windward Start, Port roundings in a Northerly wind.

Andy Warner
Sailing Manager
28/05/24
1400hrs