



## **DRAFT**

# **Hobsons Bay Yacht Club Royal Yacht Club of Victoria**

## **SI – Attachment 1 - Club Courses**

Courses generally selected from the following -

Courses 1 - 3	RYCV - Wednesday Afternoon, Sunday Morning Courses
Courses 4 - 9	RYCV/HBYC Wednesday Twilights
Courses 10 - 13	HBYC - Sunday Pursuit Courses
Courses 14 - 19	HBYC - Thursday Twilight Pursuit
Courses 20 - 23	Brass Monkey Pursuit
Courses 24 – 33	Brass Monkey Division 1, Measurement Cup
Courses 34	HBYC Two-Handed
Courses 35 – 37	HBYC Club Courses
Courses 38 – 41	RYCV Club Courses

**Course 1 (Pursuit) – Southerly**

Distance 7.6 nm

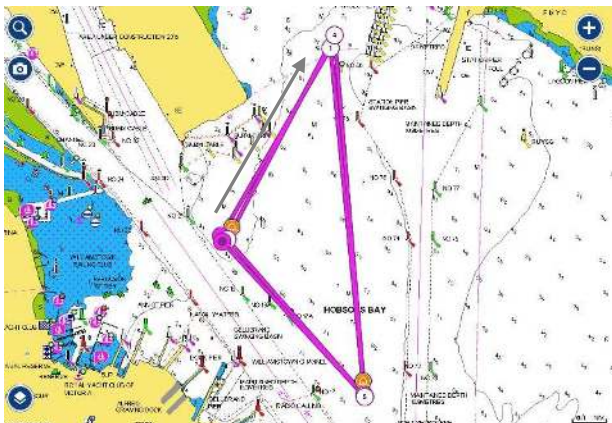


Start/Finish – Near Xray mark.

Start in a South-Easterly direction – V mark to port – R4 to port – Xray to port – V mark to port – R4 to port – Xray to port – V mark to port – R4 to port - finish.

**Course 2 (Pursuit) – Northerly**

Distance 7.6 nm



Start/Finish – Near Xray mark.

Start in a North-Easterly direction – R4 to starboard – V mark to starboard – Xray to starboard – R4 to starboard – V mark to starboard – Xray to starboard – R4 to starboard – V mark to starboard - finish.

**Course 3 (Pursuit) – East/Westerly**

Distance 7.0 nm

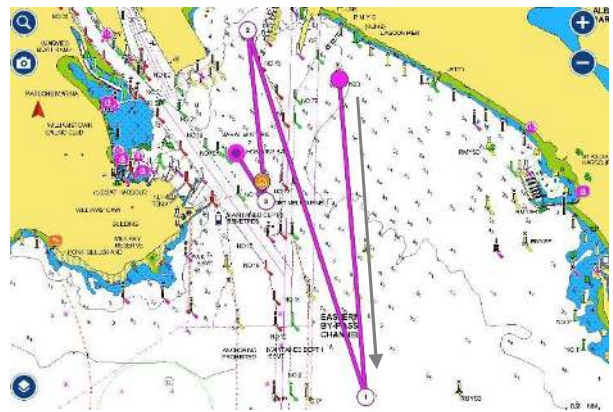


Start/Finish - Near Xray mark.

Start in a South-westerly direction – V mark to starboard - Gellibrand Shoal mark to starboard – P3 to starboard – Gellibrand Shoal mark to port – V mark to port - finish.

**Course 4 – Southerly**

Distance 6.3 nm



Start - Near RMYS G.

Finish – East Ch 17A

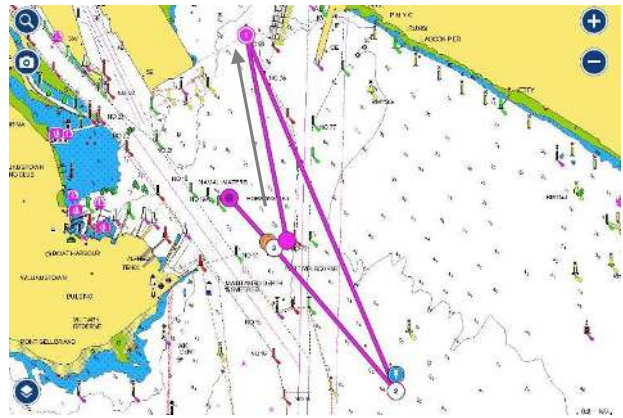
Start in a Southerly direction – east of passing marks Ch 71, T25, T23 - R3 to starboard - east of bounding marks T23, T25, Ch 71 – R4 to port – V mark to starboard – finish.

**Course 5 – Southerly**  
Distance 5.1 nm



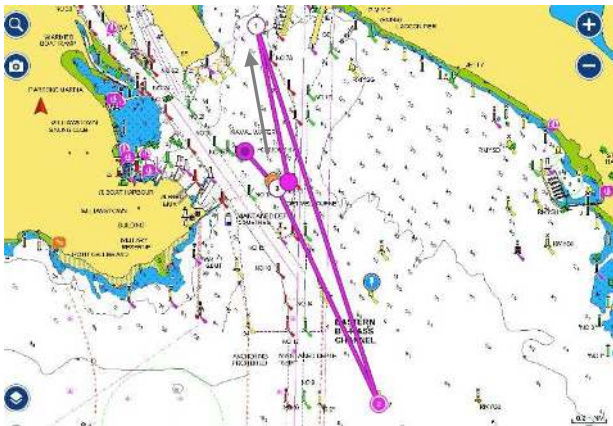
Start - Near RMYS G.  
Finish – East Ch 17A  
Start in a Southerly direction – east of passing marks Ch 71, T25 – SB3 to starboard - east of bounding marks T25, Ch 71 – R4 to port – V mark to starboard – finish.

**Course 7 – Northerly**  
Distance 4.2 nm



Start – Near Ch 72.  
Finish – East Ch 17A  
Start in a Northerly direction – R4 to starboard - east of bounding marks Ch 71, T25 – SB3 to starboard – east of Ch 71 - V mark to port – finish.

**Course 6 – Northerly**  
Distance 6.1 nm



Start – Near Ch 72.  
Finish – East Ch 17A  
Start in a Northerly direction – R4 to starboard - east of bounding marks Ch 71, T25 – R3 to starboard – east of Ch 71 - V mark to port – finish.

**Course 8 – Southerly**  
Distance 2.6 nm



Start – Near RMYS G.  
Finish – East Ch 17A  
Start in a Southerly direction - east of bounding marks Ch 71, T23, T25 – SB3 to starboard – east of T25, T23, Ch 71 - V mark to port – finish.

**Course 9 – Northerly**  
Distance 2.1 nm



Start – Near Ch 72.  
Finish – East Ch 17A  
Start in a Northerly direction – R4 to port - V mark to starboard – finish.

**Course 11 (Pursuit) – South/South-East**  
Distance 7.0 nm



Start/Finish - East of Ch 75.  
Start in a Southerly direction - east of bounding marks Ch. 71, 11, 9 and 7 –  
RMYS F to port - RMYS A to port - R4 to port - finish.

**Course 10 (Pursuit) – Northerly**  
Distance 7.0 nm



Start/Finish - East of Ch 75.  
Start in a North-Westerly direction - R4 to starboard - RMYS A to starboard - RMYS F to starboard, east of bounding marks Ch. 7, 9, 11 and 71 – finish.

**Course 12 (Pursuit) – Westerly/Easterly**  
Distance 5.1 nm



Start/Finish - Near V mark.  
Start in an Easterly direction – RMYS A to port - RMYS D to port – R4 to port - finish.

**Course 13 (Pursuit) – Northerly**  
Distance 5.1 nm



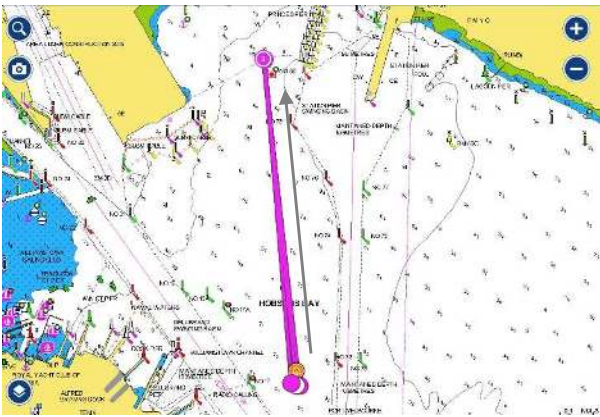
Start/Finish - Near V mark.  
Start in a Northerly direction - R4 to starboard - RMYS D to starboard - RMYS A to starboard, east of – finish.

**Course 15 (Pursuit) – Northerly**  
Distance 7.2 nm



Start/Finish – East of Ch 73.  
Start in a Northerly direction – RMYS G to starboard – R2 to starboard, east of bounding marks Ch. 7, 9, 11 and 71 – finish.

**Course 14 (Pursuit) – Northerly**  
Distance 4.5 nm



Start/Finish - Near V mark.  
Start in a Northerly direction - R4 to starboard – V mark to starboard – R4 to starboard – finish.

**Course 16 (Pursuit) – Southerly**  
Distance 4.5 nm



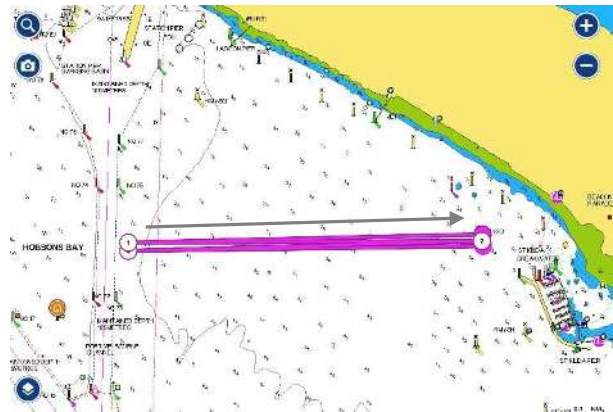
Start/Finish - Near R4.  
Start in a Southerly direction – V mark to port – R4 to port – V mark to port – finish.

**Course 17 (Pursuit) – Southerly**  
Distance 7.2 nm



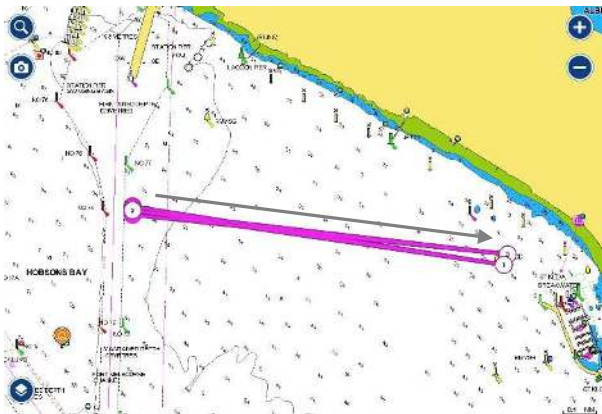
Start/Finish – East of Ch 73.  
Start in a Southerly direction, east of bounding marks Ch. 7, 9, 11 and 71 - R2 to port - RMYS G to port – finish.

**Course 19 (Pursuit) – Easterly**  
Distance 4.4 nm



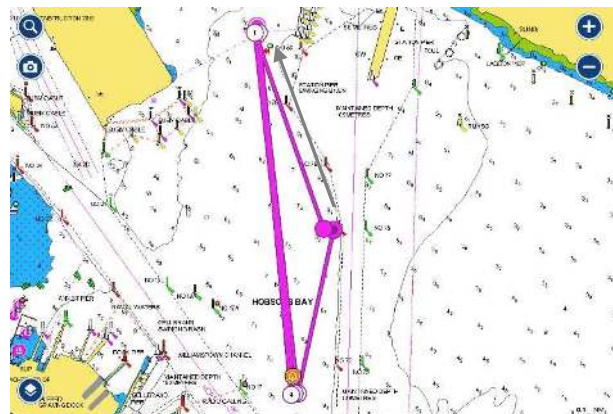
Start/Finish - East Ch 75.  
Start in an Easterly direction – RMYS D to starboard – laid mark to starboard – RMYS D to starboard - finish.

**Course 18 (Pursuit) – Westerly**  
Distance 4.4 nm



Start/Finish - East Ch 75.  
Start in an Easterly direction – RMYS D to starboard – through start/finish to starboard - RMYS D to starboard – finish.

**Course 20 (Pursuit) – Northerly**  
Distance 6.9 nm



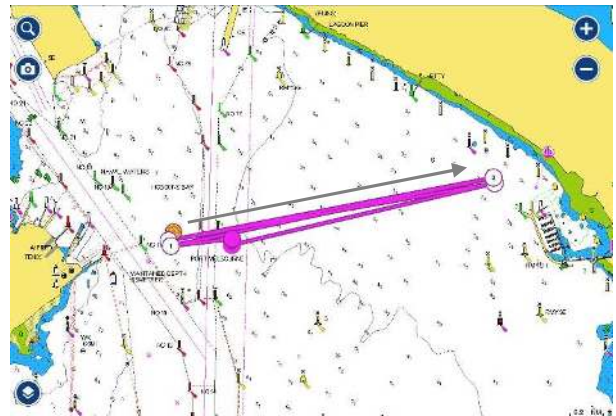
Start/Finish - West Ch 74.  
Start in a Northerly direction - R4 to port – V mark to port – R4 to port – V mark to port – finish.

**Course 21(Pursuit) – Southerly**  
Distance 6.9 nm



Start/Finish - West Ch 74.  
Start in a Southerly direction – V mark to starboard – R4 to starboard – V mark to starboard – R4 mark to starboard – V mark to starboard – R4 to starboard – finish.

**Course 23 (Pursuit) – Easterly**  
Distance 6.6 nm



Start/Finish – East of Ch 73.  
Start in an Easterly direction – RMYS D to starboard – V mark to starboard – RMYS D to starboard – V mark to starboard - finish.

**Course 22 (Pursuit) – Westerly**  
Distance 6.6 nm



Start/Finish – East of Ch 73.  
Start in a Westerly direction – V mark to starboard – RMYS D to starboard – V mark to starboard – RMYS D to starboard - finish.

**Course 24 – Northerly**  
Distance 8.8 nm



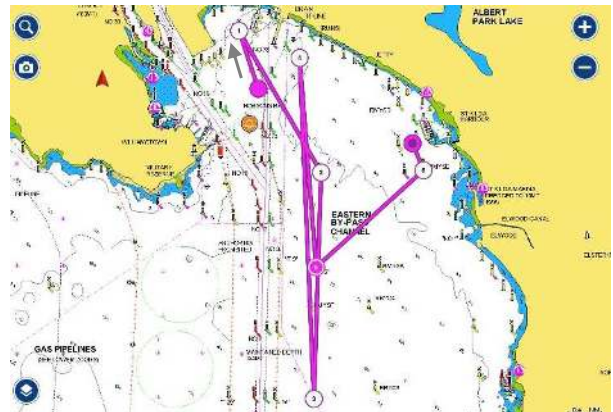
Start: West of Ch 74.  
Finish: between RMYS C and Committee Vessel.  
Start in a Northerly direction – R4 to starboard – RMYS C to starboard – R3 to port – east of passing marks Ch.11, 9 and 71 – RMYS G to port – R3 to port – east of passing mark Ch. 11 – finish.

**Course 25 – Northerly**  
Distance 11.5 nm



Start: West of Ch 74.  
Finish: between RMYS C and Committee Vessel.  
Start in a Northerly direction – R4 to starboard – RMYS C to starboard – R2 to port – east of passing marks Ch. 7, 9, 11 and 71 – RMYS G to port – R3 to port – east of passing mark Ch. 11 – finish.

**Course 27 – Northerly – RMYS Tower finish**  
Distance 12.3 nm



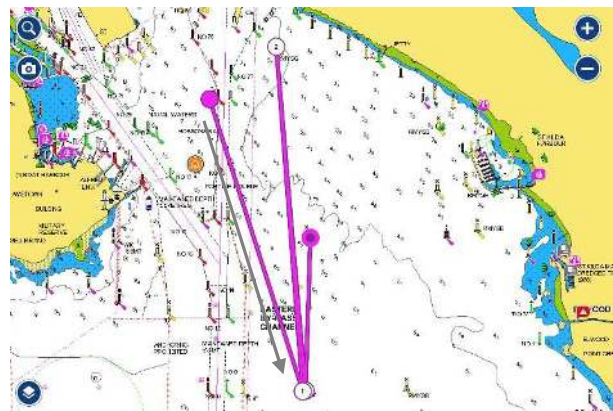
Start: Near Ch 74.  
Finish: between the RMYS tower and RMYS A.  
Start in a Northerly direction – R4 to starboard – RMYS C to starboard – R2 to port – east of passing marks Ch. 7, 9, 11 and 71 – RMYS G to port – R3 to port – RMYS E to port – finish.

**Course 26 – Northerly – RMYS Tower finish**  
Distance 9.5 nm



Start: West of Ch 74.  
Finish: between the RMYS tower and RMYS A.  
Start in a Northerly direction – R4 to starboard – RMYS C to starboard – R3 to port – east of passing marks Ch.11, 9 and 71 – RMYS G to port – R3 to port – RMYS E to port – finish.

**Course 28 – Southerly**  
Distance 7.4 nm



Start: West of Ch 74.  
Finish: between RMYS C and the Committee Vessel.  
Start in a southerly direction, east of bounding marks Ch 71, 11, 9 and 7 – R3 to port – RMYS G to port – R3 to port – finish.



**Course 29 – Southerly**

Distance 11.9 nm



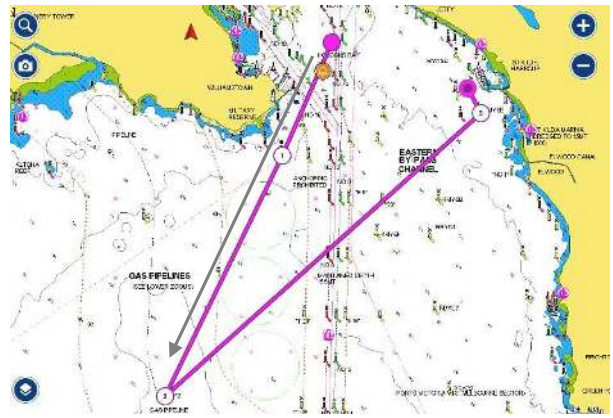
Start: West of Ch 74.

Finish: between R3 and the Committee Vessel.

Start in a southerly direction, east of bounding marks Ch 71, 11, 9 and 7 – R2 to port – RMYS G to port – R2 to port – finish.

**Course 31 – South-West (RMYS Tower)**

Distance 9.9 nm



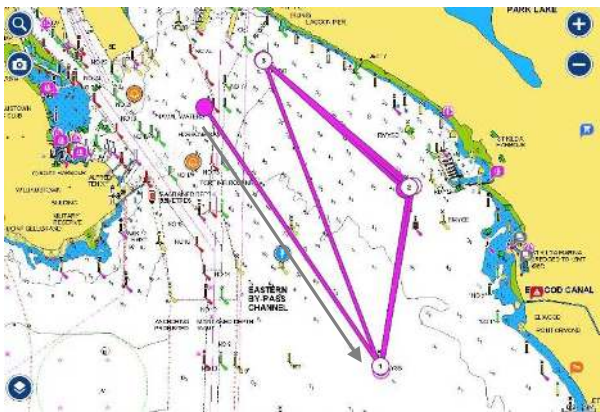
Start: West of Ch 74.

Finish: between the RMYS tower and RMYS A.

Start in a south westerly direction – Gellibrand Shoal mark to starboard – P2 to port – RMYS E to port – finish.

**Course 30 – South-East**

Distance 11.6 nm



Start: West of Ch 74.

Finish: between RMYS A and Committee Vessel.

Start in a south-easterly direction - east of bounding mark Ch.71 – RMYS B to port – RMYS A to port – RMYS G to Port – RMYS B to port – RMYS A to port – RMYS G to port – finish.

**Course 32 – Westerly (RMYS Tower)**

Distance 10.8 nm



Start: East of Ch 73.

Finish: between the RMYS tower and RMYS A.

Start in a westerly direction – V mark to port – RMYS B to starboard – P3 to port – RMYS B to port - RMYS E to port – finish.

### Course 33 – Easterly (RMY Tower)

Distance 11.7 nm



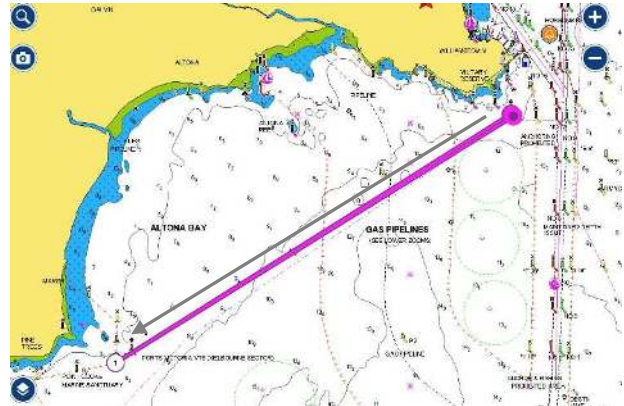
Start: East of Ch 73.

Finish: between the RMY tower and RMY A.

Start in an easterly direction – RMY A to starboard – RMY B to starboard - P3 to port – RMY B to port - RMY E to port – finish.

### Course 35 – South Westerly

Distance 11.2 nm



Start/Finish: South. of Gellibrand Shoal Mark.

Start in a south westerly direction - east of bounding mark Pt Cook East Cardinal Mark - Pt Cook South Pile to port - finish.

### Course 34 – South-Westerly (HBYC Tower)

Distance 17.8 nm



Start: Near RMY C.

Finish – across line projected 50m east from Ch 19.

Start in a Southerly direction – Gellibrand Shoal Mark to starboard – Outer Anchorage to port – Spoil Ground to Port – R2 to port - RMY C mark to port – V mark to starboard – Ch 19A to starboard - finish.

### Course 36 – Southerly

Distance 10.6 nm



Start/Finish: South. of Gellibrand Shoal Mark

Start in a southerly direction - Outer Anchorage to starboard - P3 to starboard – finish.

### Course 37 – Northerly

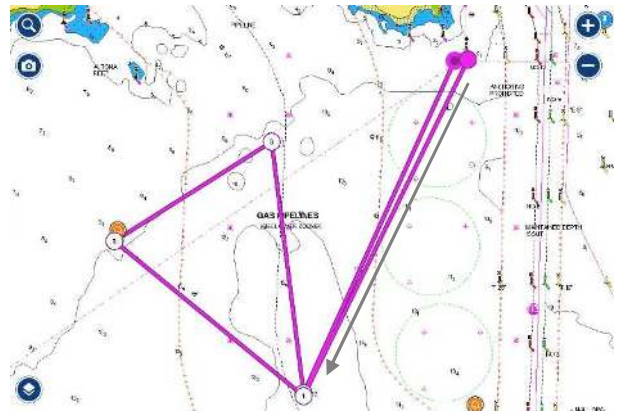
Distance 10.4 nm



Start/Finish: South of Gellibrand Shoal Mark  
Start in a northerly direction - A Mark to Port - P2 to starboard - P3 to starboard - P2 to port – finish.

### Course 39 – Southerly

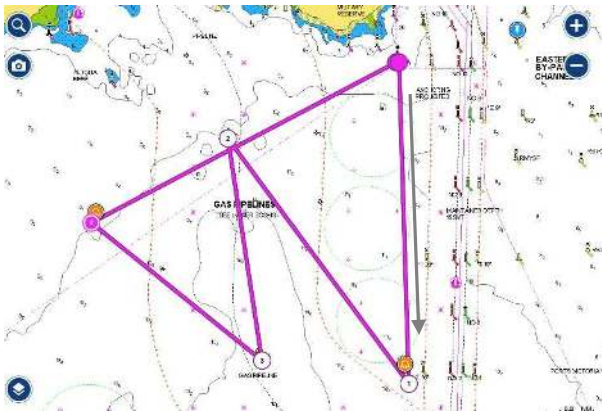
Distance 11.7 nm



Start/Finish - South of Gellibrand Shoal Mark  
Start in a Southerly direction – P2 to starboard – Zulu mark to starboard – P3 to starboard – P2 to port - finish.

### Course 38 – Southerly

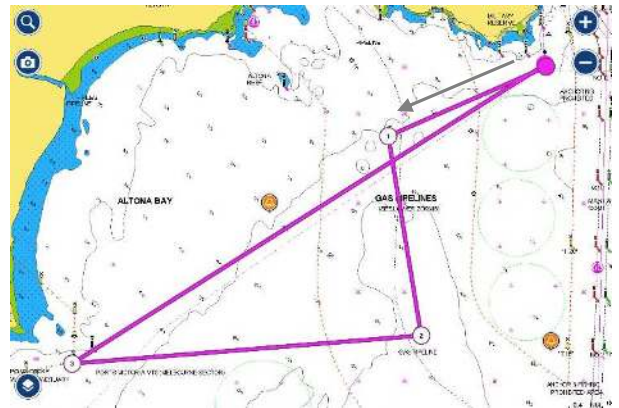
Distance 13.4 nm



Start/Finish – South of Gellibrand Shoal Mark  
Start in a Southerly direction – Uniform mark to starboard - P3 to port – P2 to starboard – Zulu mark to starboard - finish.

### Course 40 – Westerly

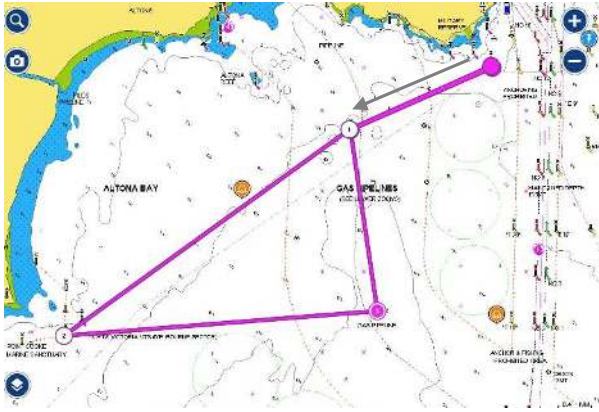
Distance 13.4 nm



Start/Finish - South of Gellibrand Shoal Mark  
Start in a Westerly direction – P3 to port – P2 to starboard – Pt Cook Sanctuary Limit mark to starboard - finish.

## Course 41 – Westerly

Distance 13.4 nm



Start/Finish - South of Gellibrand Shoal Mark

Start in a Westerly direction – P3 to port - Pt Cook

Sanctuary Limit mark to port – P2 to port – P3 to

starboard - finish.

## Marks

The mark positions and descriptions are approximate and a guide only and must not be used for navigational purposes.

Detailed locations of marks and features within Port Phillip are depicted on the relevant Charts AUS143, AUS154 and AUS155, as modified by Notices to Mariners.

### A Mark

Yellow Buoy, approx. 200 meters South of Gellibrand Shoal Mark

<b>Channel 7</b> (Ch.7)		
Port of Melbourne Channel Pile	37 53.83S	144 55.72E
<b>Channel 9</b> (Ch.9)		
Port of Melbourne Channel Pile	37 53.19S	144 55.75E
<b>Channel 11</b> (Ch.11)		
Port of Melbourne Channel Pile	37 52.69S	144 55.76E
<b>Channel 17a</b> (Ch.17a)		
Port of Melbourne Channel Pile	37 51.54S	144 55.18E
<b>Channel 19</b> (Ch.19)		
Port of Melbourne Channel Pile	37 51.48S	144 55.00E
<b>Channel 71</b> (Ch.71)		
Port of Melbourne Channel Pile	37 52.06S	144 55.76E
<b>Channel 72</b> (Ch.72)		
Port of Melbourne Channel Pile	37 51.72S	144 55.67E
<b>Channel 73</b> (Ch.73)		
Port of Melbourne Channel Pile	37 51.72S	144 55.77E
<b>Channel 74</b> (Ch.74)		
Port of Melbourne Channel Pile	37 51.30S	144 55.68E
<b>Channel 75</b> (Ch.75)		
Port of Melbourne Channel Pile	37 51.29S	144 55.80E
<b>Channel 76</b> (Ch.76)		
Port of Melbourne Channel Pile	37 51.09s	144 55.62E
<b>Gellibrand Shoal Mark</b>		
An East Cardinal Mark	37 52.56S,	144 54.90E
<b>Outer Anchorage</b>		
A pile with a light frame	37 56.91S	144 51.49E
<b>P2</b>		
A yellow buoy marked P2	37 55.46S	144 53.19E
<b>P3</b>		
A pile with light frame	37 53.38S	144 52.85E
<b>Pt Cook East Cardinal Mark</b>		
An East Cardinal Mark	37 55.58S	144 48.92E
<b>Pt Cook Sanctuary Limit Mark</b>		
Yellow special purpose beacon	37 55.74S	144 48.69E
<b>Pt Cook South Pile</b>		
Yellow Pile, top mark shape - X shape	37 55.74S	144 48.69E
<b>R2</b>		
Yellow light Buoy marked R2	37 54.54S	144 56.34E
<b>R3</b>		
Yellow light Buoy marked R3	37 53.10S	144 56.23E
<b>R4</b>		
Yellow Buoy located	37 50.70S,	144 55.36E
<b>RMYS A</b>		
An orange truncated pyramid	37 51.90S	144 57.47E

HBYC/RYCV – Club Courses

<b>RMYS B</b>		
An orange truncated pyramid	37 53.18S	144 57.20E
<b>RMYS C</b>		
An orange truncated pyramid	37 52.19S,	144 56.41E
<b>RMYS D</b>		
An orange truncated pyramid	37 51.48S,	144 57.47E
<b>RMYS E</b>		
An orange truncated pyramid	37 52.15S,	144 57.79E
<b>RMYS F</b>		
An orange truncated pyramid	37 53.59S	144 56.30E
<b>RMYS G</b>		
An orange truncated pyramid	37 51.000S	144 56.25E
<b>SB3</b>		
Special Purpose or General Buoy	37 52.48S	144 56.31E
<b>Spoil Ground</b>		
A yellow buoy	37 59.05S	144 53.05E
<b>T25</b>		
Yellow Transit Lane Mark	37 52.48S	144 55.91E
<b>Uniform</b>		
RYCV laid mark	37 55.64S	144°54.97E
<b>V Mark</b> (Volvo Finish mark)		
Yellow Special Purpose Buoy	37 51.80S	144 55.50E
<b>Xray</b>		
RYCV laid mark	37 51.28S	144 54.97E
<b>Zulu</b>		
RYCV laid mark	37 54.20S	144 51.26E