



ROYAL YACHT CLUB OF VICTORIA SAILING INSTRUCTIONS



CYGNETT  **VIODA**

2021 International Optimist Victorian Championship
6-8 March 2021



ROYAL YACHT CLUB OF VICTORIA

SAILING INSTRUCTIONS

COVID-19 Note: Due to the changing of requirements surrounding public events, the OA may change the format of the event or cancel depending on State Government restrictions in place at the time.

The notation **[DP]** in a rule in the SI's means that the penalty for a breach of that rule may, at the discretion of the protest committee, be less than disqualification.

1. CHANGES TO SAILING INSTRUCTIONS

- 1.1. Any changes to the sailing instructions will be posted before 0900 on the day it will take effect, except that any change to the schedule of races will be posted by 2000 on the day before it will take effect.

2. COMMUNICATIONS WITH COMPETITORS

- 2.1. Notices to competitors will be posted on the official notice board.
- 2.2. The Race Office will be located at the main RYCV office, ph: 9397 1277 and e: allicia.r@rycv.asn.au

3. CODE OF CONDUCT

- 3.1. [DP] Competitors and support persons shall comply with reasonable requests from race officials and RYCV staff.

4. SIGNALS MADE ASHORE

- 4.1. The flagpole is located on the RYCV lawn.
- 4.2. When flag AP is displayed ashore, '1 minute' is replaced with 'not less than 30 minutes' in the race signal AP.

5. CLASS FLAGS

- 5.1. The Open Fleet class flag will be the class insignia on a white background.
- 5.2. The Intermediate Fleet class flag will be the class insignia on a blue background.
- 5.3. The Green Fleet class flag will be the class insignia on a green background.

6. RACING AREA

- 6.1. SI Addendum 1 shows the approximate location of the racing area(s).

7. COURSES

- 7.1. SI Addendum 2 shows the courses including the approximate angles between legs, the order in which marks are to be passed, and the side on which each mark is to be left.

8. MARKS

- 8.1. Marks will be inflatable buoys and will be described in SI Addendum 2.
- 8.2. The change of course mark for the Open Fleet will be orange with a black band.
- 8.3. The change of course mark for the Intermediate Fleet will be yellow with a black band.
- 8.4. The change of course mark for the Green Fleet will be an original mark. This changes SI 10.1

9. THE START

- 9.1. The starting line is between a staff displaying an orange flag on the signal vessel at the starboard end and the course side of the port-end starting mark.

10. CHANGE OF THE NEXT LEG OF THE COURSE

- 10.1. To change the next leg of the course, the race committee will lay a new mark (or move the finishing line) and remove the original mark as soon as practicable. When in a subsequent change a new mark is replaced, it will be replaced by an original mark.

11. THE FINISH

- 11.1. The starting line is between a staff displaying a blue flag on the signal vessel at the starboard end



ROYAL YACHT CLUB OF VICTORIA

SAILING INSTRUCTIONS

and the course side of the port-end finishing mark.

12. TIME LIMITS AND TARGET TIMES

12.1.

Fleet	Time Limit	Mark 1 Time Limit	Target Time	Finish Window
Open	80	20	40	15
Intermediate	60	20	30	15

12.2. If no boat has passed Mark 1 within the Mark 1 Time Limit, the race may be abandoned.

12.3. Failure to meet the target time will not be grounds for redress. This changes RRS 62.1(a).

12.4. Intermediate Finish Window starts after the fifth boat. Intermediate boats failing to finish within the Finishing Window will be allocated a score. This changes RRS 35, A5.1 and A5.2.

13. HEARING REQUESTS

13.1. For each division, the protest time limit is 60 minutes after the last boat has finished the last race of the day or the race committee signals no more racing today, whichever is later.

13.2. Hearing request forms are available from the race office.

13.3. Notices will be posted no later than 30 minutes after the protest time limit to inform competitors of hearing in which they are parties or named as witnesses. Hearings will be held in the committee room, beginning at the time posted.

13.4. Notices of protests by the race committee, technical committee or protest committee will be posted to inform boats under RRS 61.1(b).

13.5. The Protest Committee may also inform a boat of their intention to protest a boat by blowing a whistle, displaying a red flag and hailing "protest" to the boat. A boat may take the appropriate penalty after this. This changes RRS 61.1(b).

13.6. Appendix T shall apply.

13.7. Appendix T is changed as follows:

13.7.1. In T1(b) '30%' is changed to '30% of the difference between her score and the score for RET'.

13.7.2. In T2 an Arbitration meeting may also be held when a boat is protested by the Race Committee.

14. SAFETY REGULATIONS

14.1. All boats must sign on before leaving the shore and sign off as soon as practicable after returning to the shore and the completion of the sessions' racing.

14.2. The sign on period will close at the scheduled warning signal time of the first race for that session on that day.

14.3. The sign off period will close 60 minutes after the last boat has finished the last race of the session.

14.4. Sign on/sign off shall be completed via a link provided prior to registration and will also be available on the RYCV website.

14.5. Failure to sign on/sign off in accordance with SI 14.1 will result in that boat being scored a penalty of 25% of their finishing place, but no worse than the score DNF in the first race of the day without a hearing. This changes RRS 63.1, A4 and A5.

14.6. [DP] A boat that retires from a race shall notify the race committee as soon as reasonably possible and sign off as soon as she returns to shore.

14.7. [DP] SI Addendum 3 contains information on safely crossing the shipping channel.

15. REPLACEMENT OF CREW OR EQUIPMENT

15.1. Substitution of damaged or lost equipment will not be allowed unless authorised by the race committee. Requests for substitution shall be made to the committee at the first reasonable opportunity.

15.2. Crew substitutions will not be allowed.



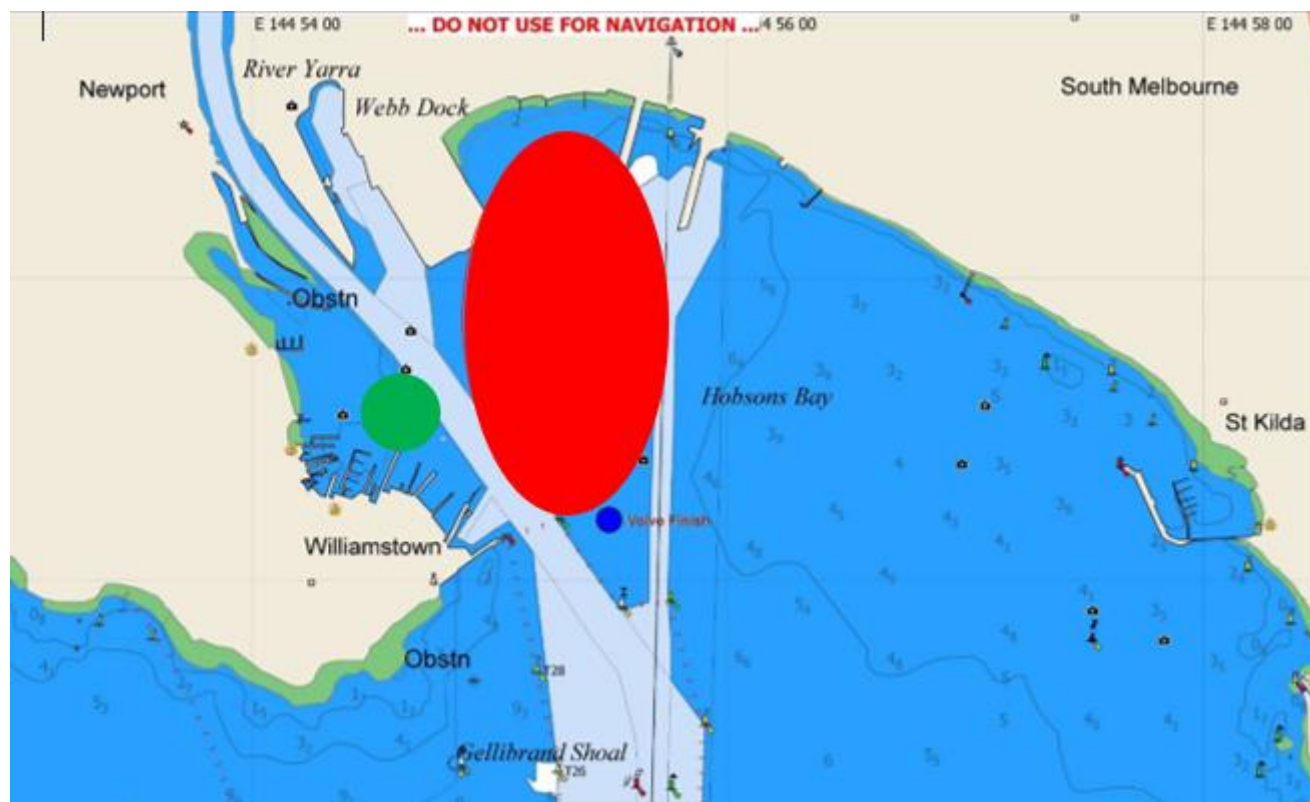
ROYAL YACHT CLUB OF VICTORIA

SAILING INSTRUCTIONS

SI Addendum 1 – Racing Areas

Red = Open and Intermediate

Green = Green Fleet



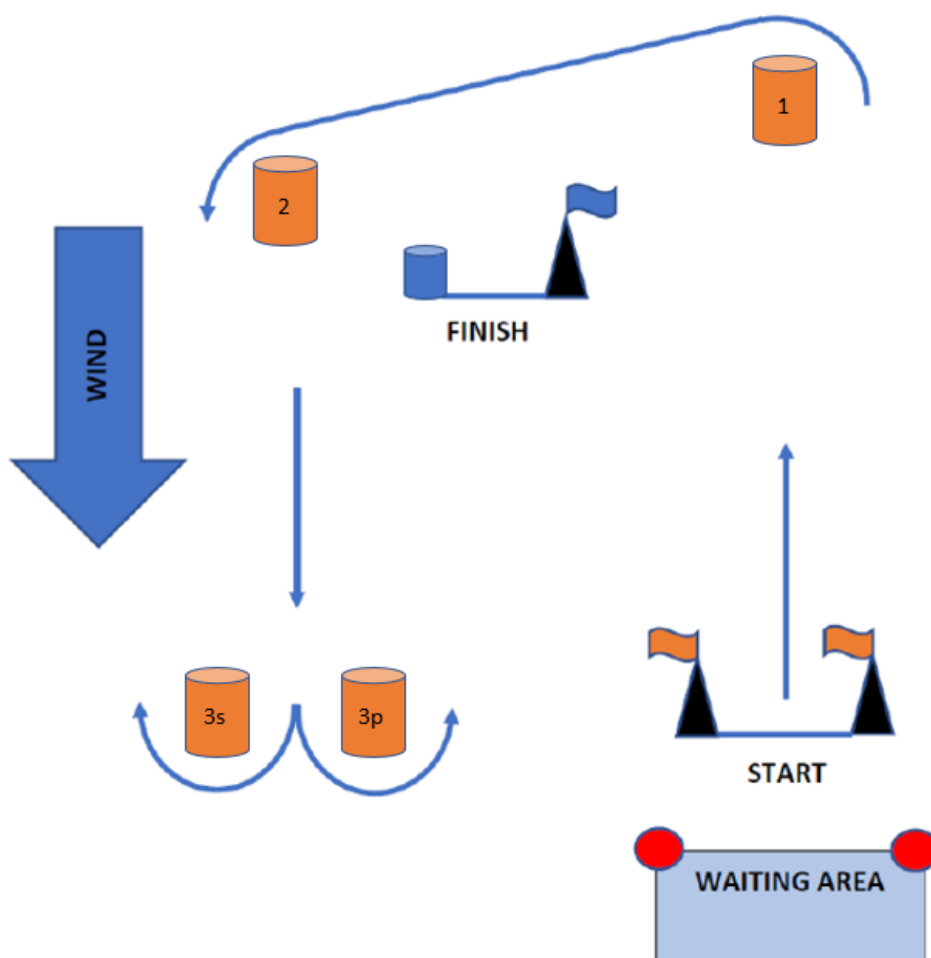


ROYAL YACHT CLUB OF VICTORIA

SAILING INSTRUCTIONS

SI Addendum 2 – Mark Descriptions and Courses

Open Fleet



Course	
OW2	Start – 1 – 2 – 3s/3p – Finish
OW3	Start – 1 – 2 – 3s/3p – 2 - 3s/3p – Finish

Mark Description	
Marks 1 / 2 & 3s/3p	Orange Inflatable Buoy
Start Starboard End	Race Committee Vessel
Start Port End	Race Committee Vessel
Finish Starboard End	Race Committee Vessel
Finish Port End	Blue Inflatable Mark

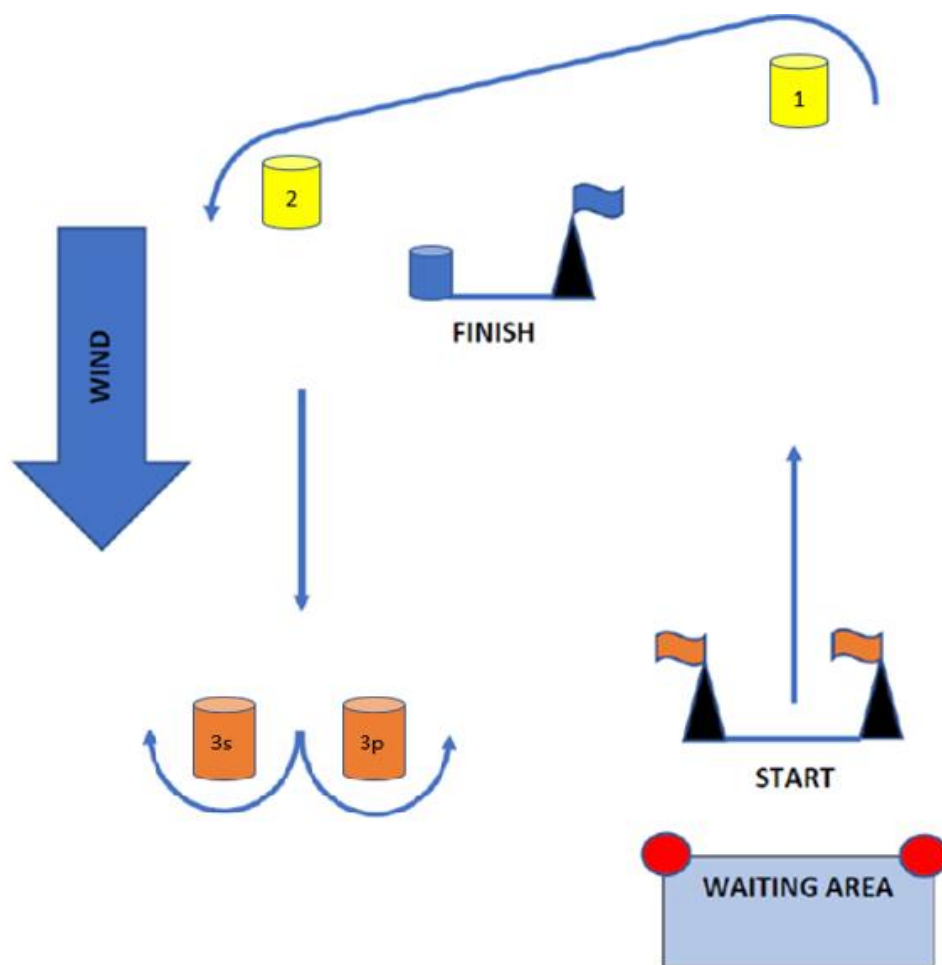


ROYAL YACHT CLUB OF VICTORIA

SAILING INSTRUCTIONS

SI Addendum 2 – Mark Descriptions and Courses cont.

Intermediate Fleet



Course	
OW2	Start – 1 – 2 – 3s/3p – Finish
OW3	Start – 1 – 2 – 3s/3p – 2 - 3s/3p – Finish

Mark Description	
Marks 1 & 2	Yellow Inflatable Buoy
Marks 3s/3p	Orange Inflatable Buoy
Start Starboard End	Race Committee Vessel
Start Port End	Race Committee Vessel
Finish Starboard End	Race Committee Vessel
Finish Port End	Blue Inflatable Mark

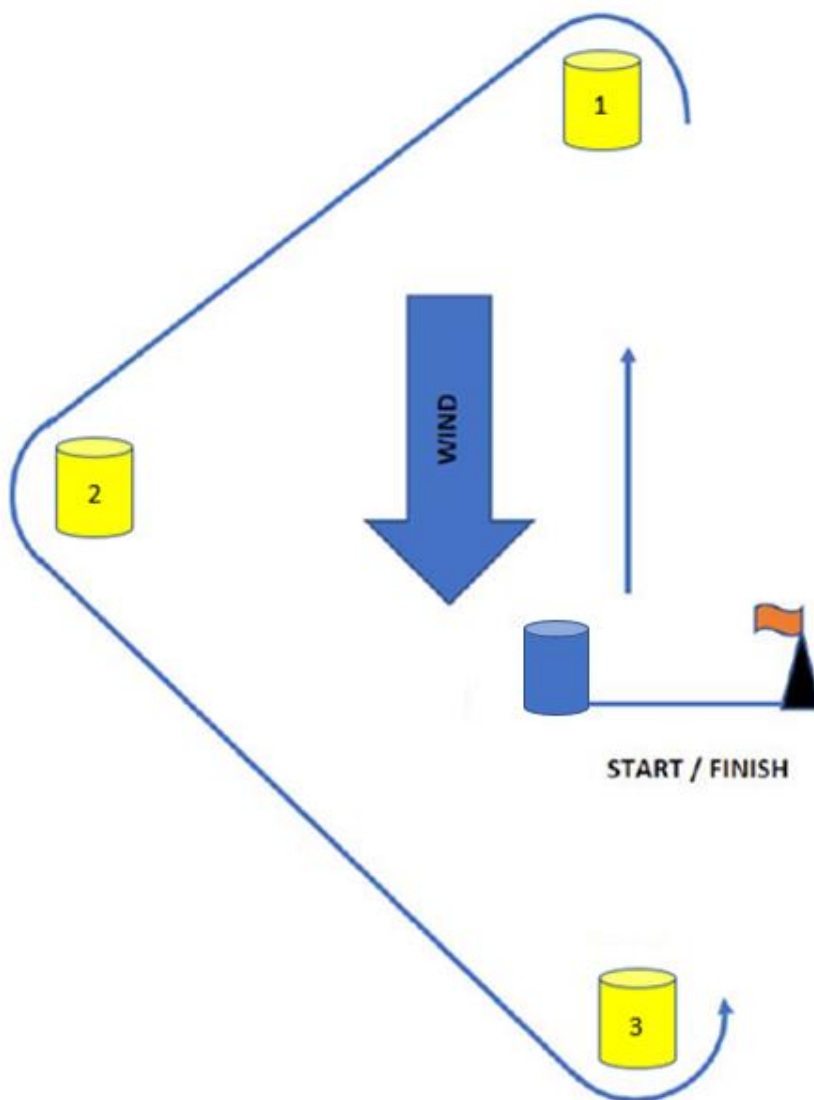


ROYAL YACHT CLUB OF VICTORIA

SAILING INSTRUCTIONS

SI Addendum 2 – Mark Descriptions and Courses cont.

Green Fleet



Course	
T1	Start – 1 – 2 – 3 - Finish
T2	Start – 1 – 2 – 3 – 1 – 2 – 3 - Finish

Mark Description	
Marks 1 / 2 & 3	Yellow Inflatable Buoy
Start/Finish Starboard End	Race Committee Vessel
Start/Finish Port End	Blue Inflatable Mark



ROYAL YACHT CLUB OF VICTORIA

SAILING INSTRUCTIONS

SI Addendum 3 – Safely Crossing the Shipping Channel

[DP] All yachts should be aware of shipping operating in the Port of Melbourne. They shall obey all Port regulations. All due care should be taken while crossing shipping channels. Any boat leaving the course area shall advise an official boat as soon as practical. Crossings should be made whenever possible under the supervision of a safety or support boat.

A pink buoy located near the channel is the assembly point for competitors to obtain permission from an official Race Committee vessel to cross the channel.

Any action that brings a vessel to the notice of the race committee or the Harbour Authority during that vessels channel crossing, may be disqualified for that day's racing without a hearing.

