



Victorian State Championships

9th - 11th March 2024



SAILING INSTRUCTIONS



International Cadet Class
Association of Victoria
(6th Fleet)

International Cadet Victorian State Championships 2024

RULES

1.1 The regatta will be governed by the rules as described in the Notices of Race

2 NOTICES TO COMPETITORS


2.1 Notices to competitors will be posted on the notice board located at the clubhouse outdoor deck.


3 CHANGES TO THE SAILING INSTRUCTIONS

3.1 Any change to the sailing instructions will be posted before 0830 on the day that they will take effect, except that changes to the schedule of races will be posted before 2000 on the day before it will take effect.

4 SIGNALS MADE ASHORE

4.1 Signals made ashore will be displayed on the main flagpole located on the northern side of the clubhouse.

4.2 When flag AP  is displayed ashore, '1 minute' is replaced with 'no less than 45 minutes' in the race signal AP).

4.3 [DP][NP] Boats shall not leave the shore until flag D  is displayed. The warning signal will not be displayed less than 45 minutes after flag D is displayed.

5 SCHEDULE OF EVENTS AND RACES

5.1 Dates and times:

Day and Date	Event	Time
Sat 9 th March 2024	Registration Competitor and Support boats	0800 - 1100
	Race Management Briefing	1000
	Competitor Information Session	1100
	First Warning (2 races scheduled)	1255
Sun 10 th March 2024	Race Management Briefing	0830
	Competitor Information Session	0900

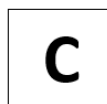
	First Warning (2 races scheduled for morning)	1025
	First Warning (2 races scheduled for afternoon)	1355
Mon 11 th March 2024	Race Management Briefing	0830
	Competitor Information Session	0900
	First Warning (2 races scheduled for morning)	1025
	Prizegiving	1500

5.2 To alert boats that a race or a sequence of races will begin soon, the orange starting line flag will be displayed with one sound at least 5 minutes before a warning signal is made.

5.3 There will be no Warning Signal made after 1400 on 11th March 2024.

6 CLASS FLAG, FLEET IDENTIFICATION AND STARTING SEQUENCE

6.1 Class flag will be International Cadet Flag:



7 RACING AREAS

7.1 Attachment A.2 shows the location of racing areas, and the selection of race area will be advised at the Competitor Race Information Session each day.

8 THE COURSES

8.1 The diagrams in Attachment A.1 show the courses, including the approximate angles between legs, the order in which marks are to be passed, and the side on which each mark is to be left.

8.2 No later than the warning signal, the race committee signal vessel will display course signals.

9 MARKS

9.1 Marks 2, 3P and 3S, will be orange buoys and marks 1, 4P, 4S and 5 will be yellow buoys.

9.2 The starting and finishing marks are a race committee signal vessel and an orange buoy with a white band.

9.3 The change of course mark referred to in SI12 will be a yellow buoy with a black band for marks 2, 3P and 3S or an orange mark with a black band for marks 1 and 4, 4P, and 4S.

10 AREAS THAT ARE OBSTRUCTIONS

10.1 The waters of Webb Dock, the waters West of the Williamstown Channel

contained between Gellibrand Pier and Breakwater Pier. the Williamstown Channel south of Number 17 Channel Beacon and the Port Melbourne Channel south of Number 15 Channel beacon. These waters are out of bounds, boats shall not race in the waters of these Channels.

- 10.2 Swing Basins are also obstructions and out of bounds when a vessel with an LOA of 50m or greater when is manoeuvring within the swing basin.

Designated swing basins have been established at the following locations:

- 10.3 At the entrance to Webb Dock

- 10.4 Off the end of Gellibrand Pier

- 10.5 Off the end of Station Pier

- 10.6 **[SP]** Care should be taken when crossing a channel when proceeding to and from the racecourse, to avoid shipping in the channels. Crossing should be made wherever possible under the supervision of a safety or support boat in the vicinity of Yarra River channel mark 19. It is a Harbour Master requirement that recreational boats keep clear of commercial shipping and not to impede their safe passage. Any boat subject of a complaint by a Ship's master or race official for not keeping clear of commercial shipping may be disqualified.

11 THE START

- 11.1 The starting line will be between a staff displaying an orange flag on the race committee signal vessel at the starboard end and and the course side of an orange buoy with a white band.

- 11.2 **[DP][NP]** Boats whose warning signal has not been made shall avoid the starting area during the starting sequence for other races.

- 11.3 A boat starting later than 9 minutes after her starting signal will be scored DNS (Did Not Start) without a hearing. This changes RRS A4 and A5.

12 CHANGE OF THE NEXT LEG OF THE COURSE

To change the next leg of the course, the race committee will: (a) lay a new mark or (b) move the finish line or (c) move the leeward mark. When the new mark is laid, the original mark will be removed as soon as practicable. When in a subsequent change a new mark is replaced, it will be replaced by an original mark.

13 THE FINISH

- 13.1 The finishing line will be between a staff displaying a blue flag aboard a race committee vessel and the finishing line mark being an orange inflatable mark with a white band.

14 TIME LIMITS AND TARGET TIMES

- 14.1 The time limits and target time in minutes are as follows:

Time limit mark 1***Time limit******Target time***

25

75

40

- 14.1 If no boat has passed Mark 1 within the Mark 1 time limit the race will be abandoned.
- 14.2 [NP] Failure to meet the target time will not be grounds for redress.
- 14.3 Boats failing to finish within 20 minutes, after the first boat sails the course and finishes, will be scored Time Limit Expired (TLE) without a hearing. This changes rules 35, A4 and A5. Boats will be scored as per RRS A5.3 with the modification that a boat timed out marked as TLE shall be scored points for finishing one more than the number of boats finishing within the time limit.

15 PROTESTS AND REQUESTS FOR REDRESS

- 15.1 Appendix T Arbitration will apply to this regatta, amended so that an Arbitrator may also form part of a subsequent protest committee.
- 15.2 In addition to the requirement to the boat being protested, boats intending to protest shall inform the Race Committee immediately after finishing, and before approaching any coach or support vessel, by approaching the starboard side of the Race Committee vessel at the Finish line, after Finishing, and hailing the protested boat's sail number. The competitor must wait for an acknowledgement from the RC. This changes rule 61.1.
- 15.3 Competitors are to register via the online system all scoring enquiries, and lodge of protest.
- 15.4 Protests and requests for redress or reopening shall be delivered there within the appropriate time limit.
- 15.5 The protest time limit is 60 minutes after the last boat has finished the last race of the day or the race committee signals no more racing today, whichever is later.
- 15.6 Notices will be posted no later than 30 minutes after the protest time limit to inform competitors of hearings in which they are parties or named as witnesses.
- 15.7 Notices of protests by the race committee or protest committee will be posted to inform boats under RRS 61.1(b).

16 SCORING

- 16.1 As per Notice of Race.

17 [NP] SAFETY REGULATIONS

- 17.1 [DP] Competitors shall always wear personal flotation devices while afloat, except briefly while changing or adjusting clothing or personal equipment.
- 17.2 Boats not leaving the harbour for a scheduled race shall promptly use the electronic sign on/off system by selecting "Not Sailing Today".
- 17.3 Before leaving to race on each scheduled racing day, a crew shall sign-on

- electronically using the online sign on/off system.
- 17.4 After returning to shore on each scheduled racing day, a crew shall sign-off electronically using the online sign on/off system within the protest time limit.
- 17.5 Instructions for use of electronic sign on/off system:
- 17.5.1 *Competitors shall provide a contact mobile phone number on the entry system.*
- 17.5.2 *Competitors will receive a text message prior to the first race containing a link to the sign on system.*
- 17.5.3 *Prior to leaving the shore, competitors shall click on the link, select the "Sign on/off" link in the menu and select either "Sign on" or "Not Sailing Today".*
- 17.5.4 *On returning to shore after racing, competitors shall click on the "Sign Off" link.*
- 17.5.5 *Competitors are to register via the online system all crew substitution.*
- 17.5.6 *If for some reason the competitor is having issues with the sign on/off, please call 0412 502 395 and the regatta office will manually sign you on/off.*
- 17.6 [DP] A boat that retires from racing shall notify the race committee before leaving the racing area, or if that is not possible, shall notify the race office as soon as possible after returning ashore and shall complete a retirement declaration in the online notice board before the expiry of the protest time limit.
- 17.7 [DP] Boats not racing shall remain clear of boats that are racing and official boats.
- 17.8 A boat that retires from a race shall notify the race committee as soon as possible.
- 17.9 All competitors shall, at all times on the water, wear lifejackets on the outside of clothing, except that a close fitting, sleeveless, pocketless bib or vest may be worn outside the lifejacket. Lifejackets shall be in good condition and in accordance with the specifications issued or approved by a National Authority or Standards Organisation and branded in the country of origin or manufacture.
- 17.10 Attention is drawn to RRS 1.2, RRS 3 and RRS 4.

18 REPLACEMENT OF CREW OR EQUIPMENT

- 18.1 Helms shall not be replaced.
- 18.2 Substitution of crew may be allowed with prior written approval of the race committee. Application may be made online from the regatta results page
- 18.3 Substitution of damaged or lost equipment will not be allowed unless approved by the class measurer (technical committee). Requests for substitution shall be made to the race committee at the first reasonable opportunity, including retrospectively, provided that, in the case of a retrospective application, a Request for Substitution of Equipment Form may be completed online and submitted to the technical committee prior to the end of protest time of the day in which the substitution occurred.

- 18.4 Approval will not be given by the jury under SI 19.2 or the technical committee under SI 19.4 if they consider that any proposed substitution of crew, boat or equipment is not necessary in order for the boat concerned to remain reasonably competitive or is intended to give a boat a competitive advantage (or is part of a course of conduct which is so intended) and
- (a) in the case of a proposed substitution of a crew it will not be given except in the case of injury, illness or a circumstance which was unforeseen at the time of registration and,
 - (b) in the case of any boat or its equipment will not be given unless it is considered that the boat or equipment which it is proposed to be replaced has been damaged, lost or destroyed accidentally.

19 [DP][NP] EQUIPMENT AND MEASUREMENT CHECKS

- 19.1 A boat or its equipment may be inspected at any time for compliance with the class rules and sailing instructions. On the water, a boat can be instructed by a race committee equipment inspector or measurer to proceed immediately to a designated area for inspection.

20 [DP]NP] EVENT ADVERTISING

- 20.1 Boats may be required to fix and display advertising decals supplied at registration. Such decals shall be fixed and maintained for the life of the regatta in accordance with the instructions provided at registration.

21 OFFICIAL VESSELS

- 21.1 Official vessels will be marked with the RYCV burgee:

22 SUPPORT VESSELS

- 22.1 Except when giving assistance to a boat in danger at that boat's request, or at the request of the race committee, team leaders, coaches and other support persons shall stay outside the starting area and areas where boats are racing from the time of the preparatory signal for the first fleet until all boats in remaining fleets have finished or retired or the race committee signals a postponement or an abandonment for all fleets racing. The support boats shall keep 100 metres clear of the area behind the finishing line. The distance from boats racing should be not less than 100 metres.
Description starting area: 100 metres on both sides of the starting line and their 100 metre extensions.
- 22.2 All Coach and Support vessels shall display a number provided upon registration at the Race Office.
- 22.3 Kill cords must be worn by Coach and Support vessel and other boat drivers at all times.

23 [DP][NP] TRASH DISPOSAL

23.1 Boats may place trash aboard support or official boats while not racing.

24 [DP][NP] BOAT PARK

24.1 Boats shall be kept in their assigned places while they are in the boat park.

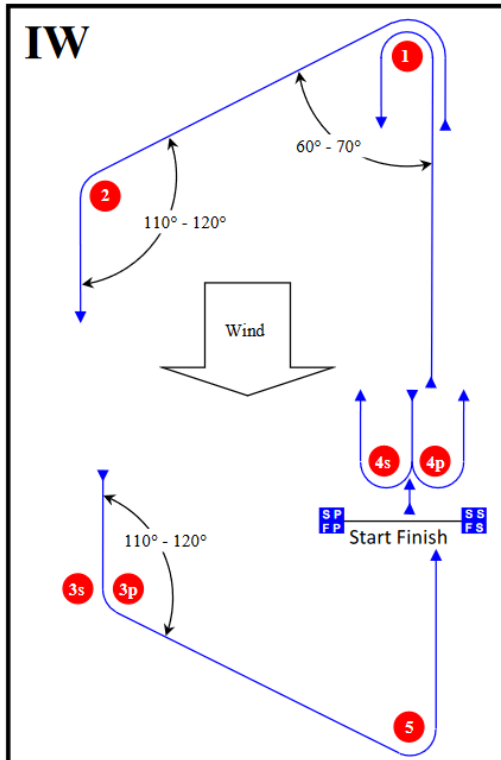
25 RADIO COMMUNICATION

25.1 Except in an emergency, a boat shall neither make radio or data transmissions while racing nor receive radio or data communications not available to all boats. This restriction also applies to mobile telephones.

26 DISCLAIMER OF LIABILITY

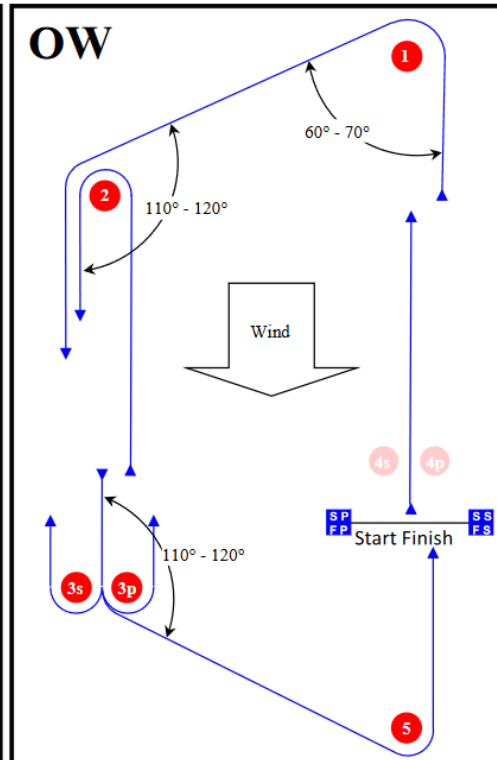
26.1 Competitors participate in the regatta entirely at their own risk. See RRS 3, Decision to Race. Neither the Organising Authority nor the committees, the sponsors, the insurers, and any other party and/or persons involved in the organisation of the regatta will accept any liability for material damage or personal injury or death sustained in conjunction with or prior to, during, or after the regatta.

ATTACHMENT A.1 Course Diagrams



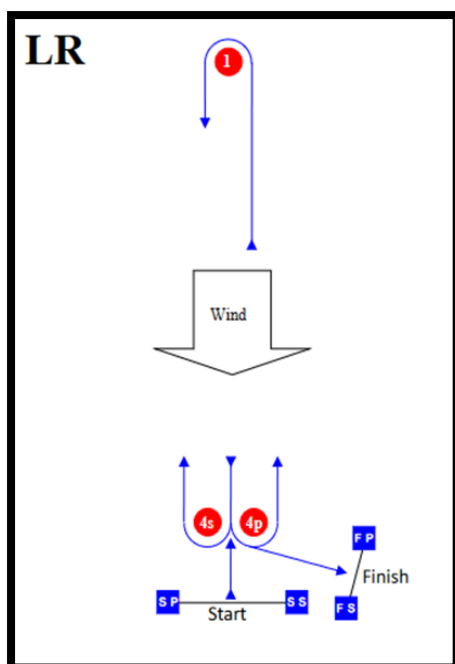
Course: Inner Trapezoid with beat to finish

Signal	Mark Rounding Order
IW1	Start – 1 – 2 – 3p – 5 – Finish
IW2	Start – 1 – 4s/4p – 1 – 2 – 3p – 5 – Finish
IW3	Start – 1 – 4s/4p – 1 – 4s/4p – 1 – 2 – 3p – 5 – Finish
IW4	Start – 1 – 4s/4p – 1 – 4s/4p – 1 – 4s/4p – 1 – 2 – 3p – 5 – Finish



Course: Outer Trapezoid with beat to finish

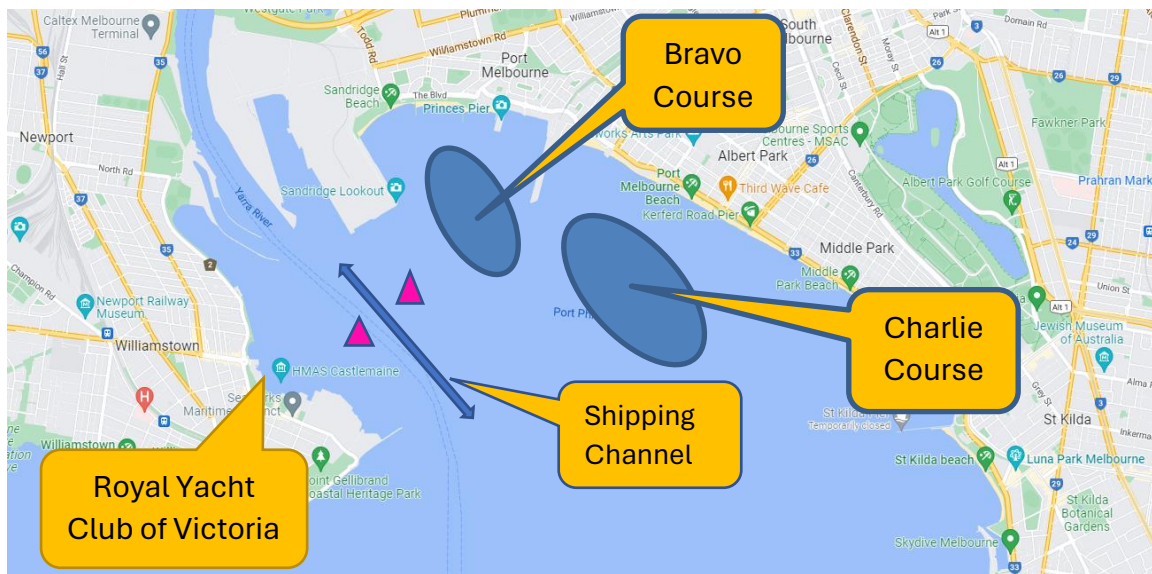
Signal	Mark Rounding Order
OW2	Start – 1 – 2 – 3s/3p – 2 – 3p – 5 – Finish
OW3	Start – 1 – 2 – 3s/3p – 2 – 3s/3p – 2 – 3p – 5 – Finish
OW4	Start – 1 – 2 – 3s/3p – 2 – 3s/3p – 2 – 3s/3p – 2 – 3p – 5 – Finish



Windward Leeward with reach to finish

Signal	Mark Rounding Order
LR2	Start 1-4s/4p-1-4p-Finish
LR3	Start 1-4s/4p-1-4s/4p-1-4p-Finish

ATTACHMENT A.2 - RACING AREAS



[DP] [NP] SAFELY CROSSING THE SHIPPING CHANNEL

All boats should be aware of shipping operating in the Port of Melbourne. They shall obey all Port regulations. All due care should be taken while crossing shipping channels. Any boat leaving the course area shall advise an official boat as soon as practical. Crossings should be made whenever possible under the supervision of a safety or support boat.

A pink buoy located near the channel is the assembly point for competitors to obtain permission from an official Race Committee vessel to cross the channel.

Any action that brings a vessel to the notice of the race committee or the Harbour Authority during that vessels channel crossing, may be protested by the Race Committee.