



ROYAL YACHT CLUB OF VICTORIA SAILING INSTRUCTIONS

**Sunday Off The Beach Summer Series
7 November 2021 to 10 April 2022**





ROYAL YACHT CLUB OF VICTORIA

SAILING INSTRUCTIONS

1 RULES

- 1.1 The event is governed by the rules as defined in The Racing Rules of Sailing including the prescriptions of Australian Sailing (RRS)
- 1.2 The Australian Sailing (AS) Special Regulations Part 2 will apply.
- 1.3 The International Cadet Class rules will apply to the Cadet Class.
- 1.4 Reasonable actions by event officials to implement COVID-19 guidance, protocols, or legislation, even if they later prove to have been unnecessary, are not improper actions or omissions.
- 1.5 [DP] Denotes a rule for which the penalty will be applied by Race Committee without a hearing. This changes RRS 63.1 and A5.
- 1.6 [NP] Denotes a rule for which that a boat may not protest another boat for breaking that rule. This changes RRS 60.1(a).

2 NOTICES TO COMPETITORS

- 2.1 Notices to competitors will be posted on the official notice board in the Off The Beach (OTB) club room. Notices may also be posted to the RYCV website.
- 2.2 The race office is located at the main RYCV office, telephone 9397 1277, email rycv@rycv.asn.au.
- 2.3 On the water, the race committee intends to monitor and communicate on VHF radio channel 15.

3.0 CHANGES TO THE SAILING INSTRUCTIONS

- 3.1 Any change to the sailing instructions will be posted before 1000 on the day it will take effect, except that any change to the schedule of races will be posted by 1500, three (3) days before it will take effect.

4.0 SIGNALS MADE ASHORE

- 4.1 Signals made ashore will be displayed on the OTB flagpole, adjacent to the OTB club room.
- 4.2 When flag AP is displayed ashore, '1 minute' is replaced with 'not less than 30 minutes in the RRS Race Signals.

5.0 SCHEDULE OF RACES

- 5.1 As per the Notice Of Race (NOR)
- 5.2 On each Racing Day there shall be a pre-race briefing held at about 1245hrs
- 5.3 The scheduled warning signal for the first race on each day is 1400hrs



ROYAL YACHT CLUB OF VICTORIA

SAILING INSTRUCTIONS

6.0 CLASSES

Class	Class Flag
International Cadet	International Cadet Class Flag
Optimist	Optimist Class Flag
29er	29er Class Flag
International 14	International 14 Class Flag
Laser	Laser Class Flag
Combined Senior OTB Classes	Code Flag W
Combined Junior OTB Classes	Code Flag R

7.0 RACE AREA

7.1 Appendix A shows the location of the racing area

8.0 COURSES

8.1 Appendix B shows the courses, the order in which the marks are to be passed and the side on which each mark is to be left.

8.2 In the event a gate mark is missing, a single mark at the gate location shall be rounded to port.

8.3 No later than the warning signal, the race committee boat shall display the course to be sailed

9.0 MARKS

9.1 Where there is a combined start/finish line, the pin end mark shall be an orange cylindrical buoy.

9.2 Where there is a separate finish line, the pin end finish mark shall be a blue cylindrical buoy.

9.3 Rounding marks will be yellow cylindrical buoys for junior classes and orange cylindrical buoys for senior classes.

9.4 The change of course mark will be a yellow cylindrical buoy with a black band.

10.0 CHANGE OF THE NEXT LEG OF THE COURSE

10.1 Changes to a leg of the course may be made in accordance with RRS 33.

10.2 The change mark is described in SI 9.4

10.3 When in a subsequent change is made the change course mark will be replaced by an original mark.

11.0 SHIPPING AND AREAS THAT ARE OBSTRUCTIONS

11.1 The following areas are designated as obstructions: The waters of Webb Dock, the waters West of the Williamstown Channel contained between Gellibrand Pier and Breakwater Pier. the Williamstown Channel south of Number 17 Channel Beacon and the Port Melbourne Channel south of Number 15 Channel beacon. These waters are out of bounds, boats shall not race in the waters of these Channels.



ROYAL YACHT CLUB OF VICTORIA

SAILING INSTRUCTIONS

- 11.2** Swing Basins are also obstructions and out of bounds when a vessel with an LOA of 50m or greater when is manoeuvring within the swing basin. Designated swing basins have been established at the following locations:

11.2.1 At the entrance to Webb Dock

11.2.2 Off the end of Gellibrand Pier

11.2.3 Off the end of Station Pier

- 11.3** [DP] Care should be taken when crossing a channel when proceeding to and from the racecourse, to avoid shipping in the channels. Crossing should be made wherever possible in the vicinity of Yarra River channel mark 19. Any boat subject of a complaint by a Ship's master for any reason whatsoever may be disqualified

12.0 START SEQUENCE

- 12.1** The Race shall be started according to signals as in RRS 26.

- 12.2** The starting line will be between a staff displaying an orange flag on the committee boat and the pin end mark.

- 12.3** [DP] A boat that does not start within five minutes after her starting signal will be scored Did Not Start.

13.0 TIME LIMITS

- 13.1** Aggregate Races

13.1.1 The time limit for the first boat shall be 2 hours from the class start time.

13.1.2 [DP] Boats failing to finish within 20 minutes after the first boat sails the course.

- 13.2** Club Championship Races

13.2.1 The time limit for the first boat shall be 1.5 hours from the start time.

13.2.2 [DP] Boats failing to finish within 15 minutes after the first boat sails the course.

14.0 PENALTY SYSTEM

- 14.1** Appendix P may apply as changed herein. Rule P2.3 will not apply and rule P2.2 is changed so that it will apply to any penalty after the first one.

- 14.2** A boat that has taken a penalty or retired in accordance with rule 44.1 shall complete an acknowledgment form at the OTB club rooms before the end of the protest time limit.

15.0 HEARING REQUESTS

- 15.1** Protest forms are available at the OTB club rooms. Protests and requests for redress or reopening shall be delivered there within the appropriate time limit.

- 15.2** Boats intending to protest or request redress shall inform the race committee vessel at the end of the race, before returning to shore.

- 15.3** The protest time limit is 60 minutes after the last boat has finished the last race of the day. The same time limit applied to protests by the race committee and the protest committee about incidents they observe in the racing area and to requests for redress. This changes RRS 61.3 and 62.2.



ROYAL YACHT CLUB OF VICTORIA

SAILING INSTRUCTIONS

- 15.4** Notices will be posted no later than 60 minutes after the protest time limit to inform competitors of hearings in which they are parties or named as witnesses. Hearings will be held in the protest room located at RYCV beginning at the time posted.
- 15.5** Notices of protests by the race committee, technical committee or protest committee will be posted to inform boats under RRS 61.1(b).
- 15.6** A list of boats that, under SI 14.0, have been penalised for, or have acknowledged breaking RRS 42 or will be posted.
- 15.7** [NP] [DP] Breaches of NOR or SIs clauses 14.2, 17, 18, shall not be grounds for a protest by a boat but will be penalised at the discretion of the Race Committee.

16.0 HEARING REQUESTS

- 16.1** The protest time limit is 90 minutes after the last boat has finished the last race of the day, or the race committee signals no more racing today, whichever is later.
- 16.2** Hearing request forms are available from the OTB club rooms.
- 16.3** Notices will be posted no later than 30 minutes after the protest time limit to inform competitors of hearings in which they are parties or named as witnesses. Hearings will be held in the Committee Room, beginning at the time posted.

17.0 COMPETITOR SAFETY

- 17.1** In accordance with Victorian Law, all competitors shall always wear an approved personal floatation device (type 1 or type 2) while afloat. This changes RRS 40.
- 17.2** All competitors shall comply with current Victorian Covid-19 Restrictions. Up to date details can be found on the DHHS website.
- 17.3** A sign on/sign off sheet is provided in the OTB club rooms prior to and after racing. The boat, skipper and crews' name and sail number, shall be written clearly on the sheet. On returning to shore, it is the skipper's responsibility to ensure the boat is promptly signed off. Failing to comply may result in being scored DNC.
- 17.4** Any boat leaving the course area shall advise the race committee as soon as practical. Crossings should be made wherever possible under the supervision of a safety or support boat. Yarra River channel mark 19 (located adjacent to the workshops pier) is the assembly point for competitors to obtain permission from an official club boat to cross the channel.
- 17.5** When not racing, yachts are requested to give the race committee right of way and ample room to manoeuvre when they are engaged in official duties.
- 17.6** An indemnity and safety declaration form must be signed by all competing junior sailors and their parent or guardian at the beginning of the season. These forms are available on the RYCV website under "Junior Enrolment & Consent Form".



ROYAL YACHT CLUB OF VICTORIA

SAILING INSTRUCTIONS

18.0 REPLACEMENT OF EQUIPMENT AND CREW

- 18.1** Substitution of skippers will not be allowed, and substitution of crew or equipment will only be permitted if made in writing to the race committee at least 1 hour before the scheduled time of the first race affected. Such permission is not valid unless it is given in writing.
- 18.2** Any substituted junior crew must have a valid parent consent form submitted to the race committee.

19.0 ADVERTISING

- 19.1** Boats shall display advertising chosen and supplied by the organising authority.

20.0 OFFICIAL BOATS

- 20.1** Race Committee and patrol boats may display the RYCV burgee.
- 20.2** Official boats, such as judge, coach or media boats will be identified at the pre-race briefing.

21.0 FURTHER INFORMATION

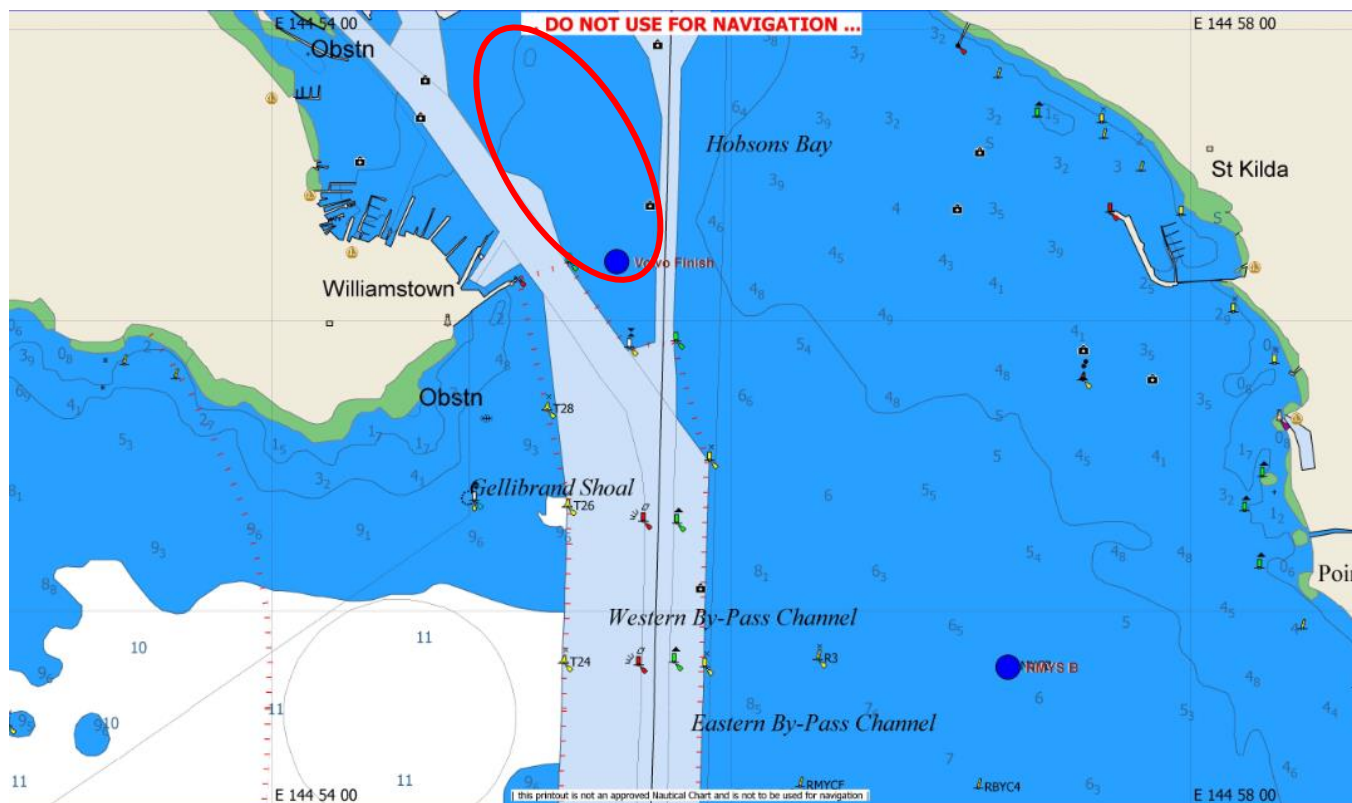
Andy Warner
sailmanager@rycv.asn.au
0402 858 123



ROYAL YACHT CLUB OF VICTORIA

SAILING INSTRUCTIONS

Appendix A Racing Area



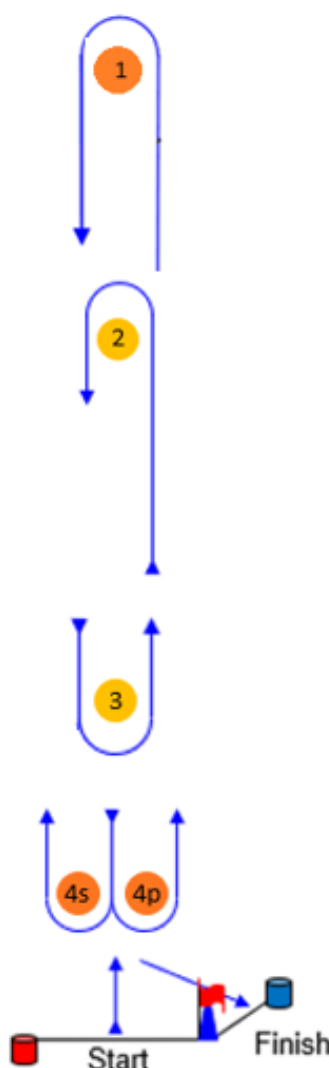


ROYAL YACHT CLUB OF VICTORIA

SAILING INSTRUCTIONS

Appendix B Courses

LR



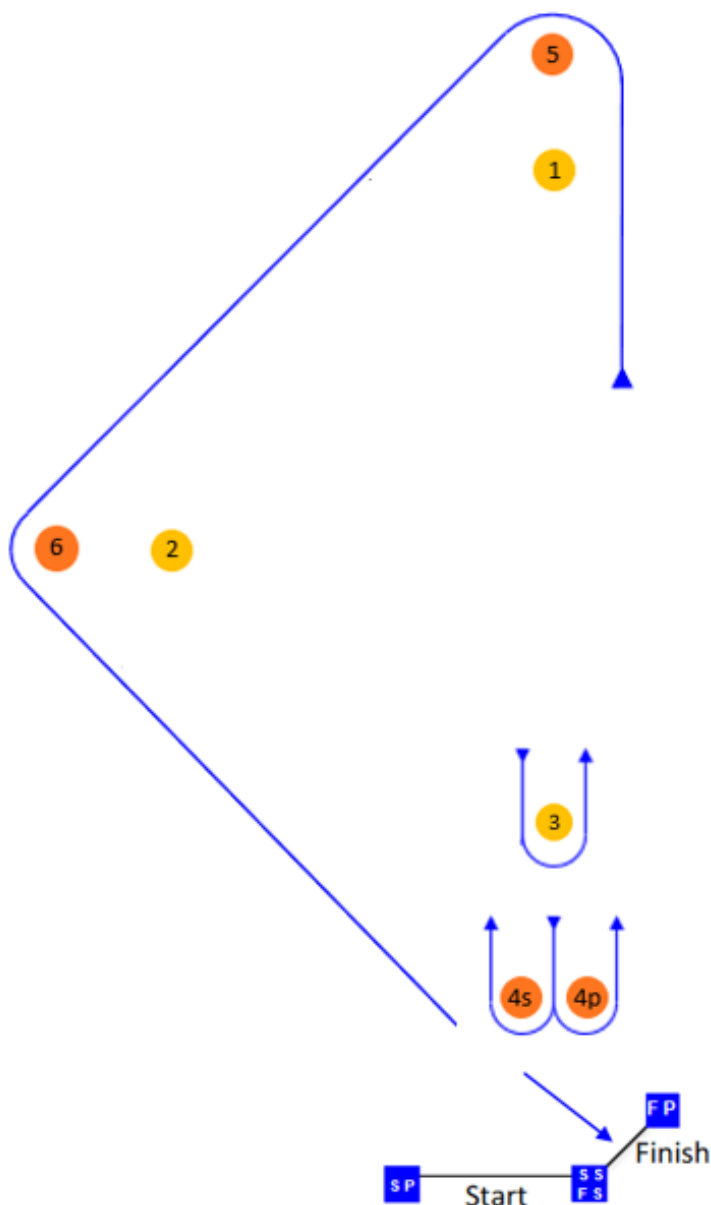
Course: Leeward Finish	
Junior Classes = Yellow Marks Senior Classes = Orange Marks	
Signal	Mark Rounding Order
LR2 (Y)	Start-2 - 3 - 2 - 3 - Finish
LR3 (Y)	Start - 2 - 3 - 2 - 3 - 2 - 3 - Finish
LR4 (Y)	Start - 2 - 3 - 2 - 3 - 2 - 3 - 2 - 3 - Finish
LR2 (O)	Start - 1 - 4s/4p - 1 - 4p - Finish
LR3 (O)	Start - 1 - 4s/4p - 1 - 4s/4p - 1 - 4p - Finish
LR4 (O)	Start - 1 - 4s/4p - 1 - 4s/4p - 1 - 4s/4p - 1 - 4p - Finish



ROYAL YACHT CLUB OF VICTORIA

SAILING INSTRUCTIONS

TR



Course Diagram	
Signal	Mark Rounding Order
TR1 (Y)	Start – 1 – 2 – Finish
TR2 (Y)	Start – 1 – 3 – 1 – 2 – Finish
TR3 (Y)	Start – 1 – 3 – 1 – 3 – 1 – 2 – Finish
TR1 (O)	Start – 5 – 6 – Finish
TR1 (O)	Start – 5 – 4s/4p – 5 – 6 – Finish
TR1 (O)	Start – 5 – 4s/4p – 5 – 4s/4p – 5 – 6 – Finish

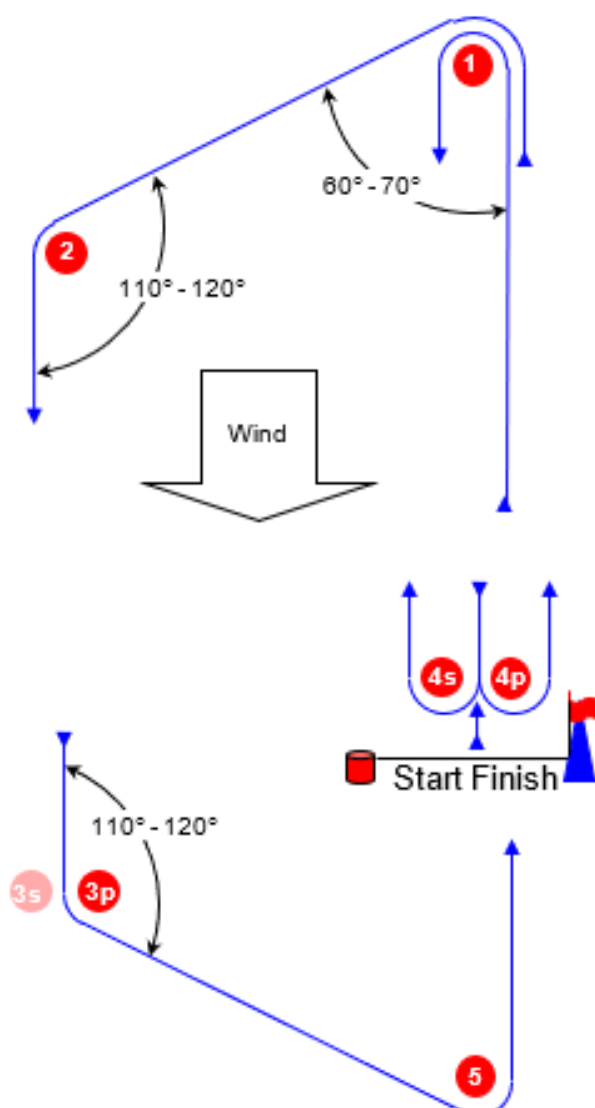


ROYAL YACHT CLUB OF VICTORIA

SAILING INSTRUCTIONS

Course Illustrations – Trapezoid with beat to finish. Start and finish by signal boat

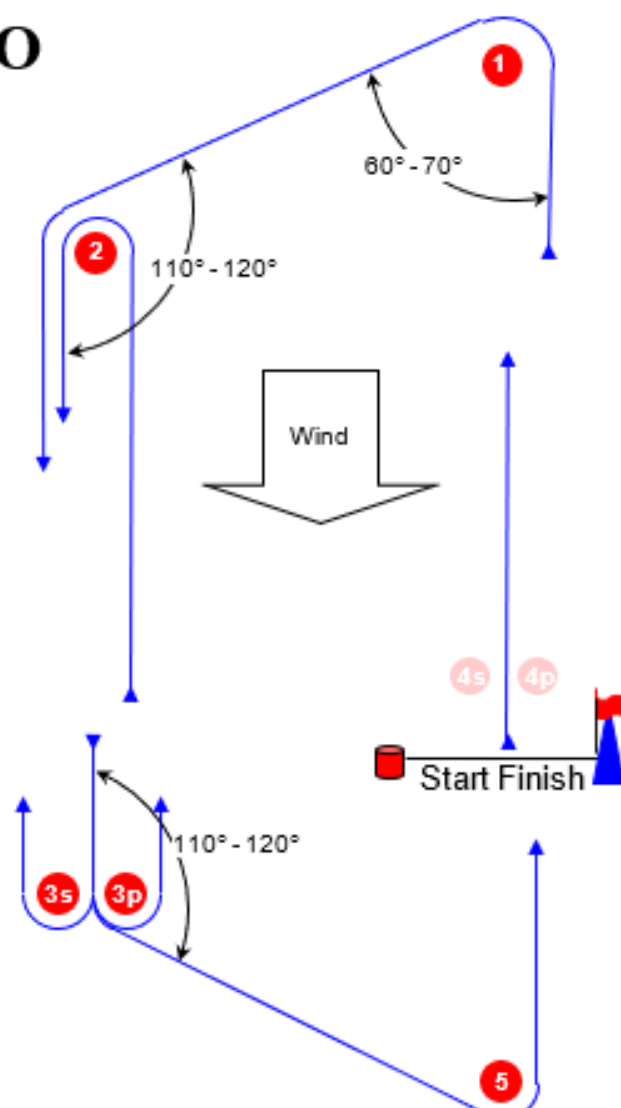
I



Course: Inner Trapezoid with beat to finish

Signal	Mark Rounding Order
I2	Start – 1 – 4s/4p – 1 – 2 – 3p – 5 – Finish
I3	Start – 1 – 4s/4p – 1 – 4s/4p – 1 – 2 – 3p – 5 – Finish
I4	Start – 1 – 4s/4p – 1 – 4s/4p – 1 – <u>4s/4p</u> – 1 – 2 – 3p – 5 – Finish

O



Course: Outer Trapezoid with beat to finish

Signal	Mark Rounding Order
O2	Start – 1 – 2 – 3s/3p – 2 – 3p – 5 – Finish
O3	Start – 1 – 2 – 3s/3p – 2 – 3s/3p – 2 – 3p – 5 – Finish
O4	Start – 1 – 2 – 3s/3p – 2 – 3s/3p – 2 – <u>3s/3p</u> – 2 – 3p – 5 – Finish